

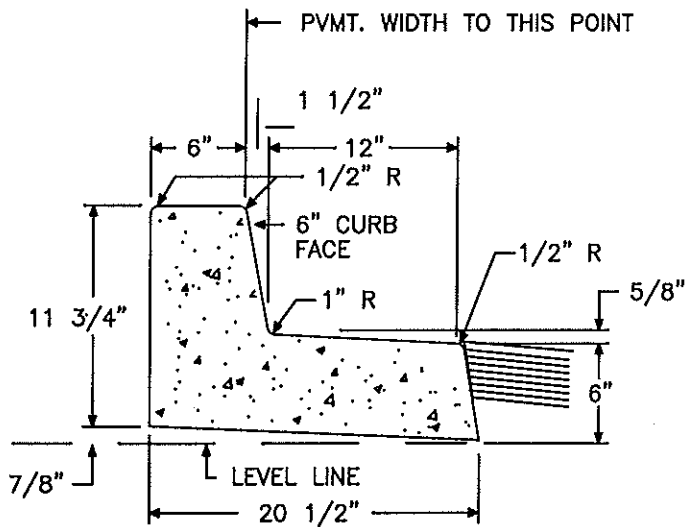
**SECTION 200**  
**STREET IMPROVEMENTS DETAILS**

<b><u>PLAN NO.</u></b>	<b><u>DESCRIPTION</u></b>
200-1	CONCRETE CURB AND GUTTER
200-2	CONCRETE CURB AND GUTTER
200-3	COURT WAY CURB AND GUTTER FOR PRIVATE STREET ONLY
201	SIDEWALK DETAILS
202	CURB AND SIDEWALK RETURN DETAIL
203	SIDEWALK LANDING AND CURB RETURN
204-1	CURB RAMP CASE A MID-BLOCK LOCATION
204-2	CURB RAMP CASE B
204-3	CURB RAMP CASE C
204-4	CURB RAMP CASE D
204-5	CURB RAMP CASE E
205	RESIDENTIAL DRIVE APPROACH
206-1	COMMERCIAL AND INDUSTRIAL DRIVE APPROACH
206-2	COMMERCIAL AND INDUSTRIAL DRIVE APPROACH
207	ALLEY APPROACH
208	CONCRETE ALLEY SECTION
209	REPAIRS TO CONCRETE ALLEY SECTION
210-1	SURVEY MONUMENT
210-2	SURVEY MONUMENT TYPE A
210-3	SURVEY MONUMENT TYPE B
211	STREET LIGHTS PARKWAY LOCATION
212	STREET NAME SIGN LOCATIONS
213	TEMPORARY ACCESS RAMP
214	PARKWAY OBSTRUCTIONS
215	NEWSRACK STANDARD
216	SIGN POST BLOCK OUT
217	METER AND VAULT COVER DETAIL SIDEWALK INSTALLATION ONLY
218	MOISTURE BARRIER DETAIL

**SECTION 200**  
**STREET IMPROVEMENTS**

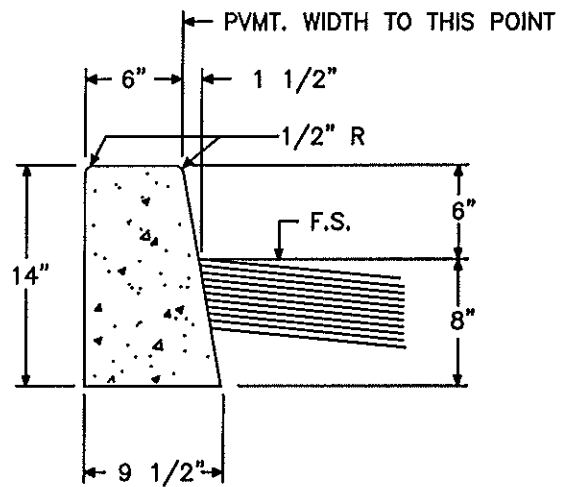
(Continued)

- 219 UTILITY TRENCH REPAIR
- 220-1 UNDER SIDEWALK DRAIN EXISTING CONSTRUCTION
- 220-2 UNDER SIDEWALK DRAIN NEW CONSTRUCTION
- 221-1 CONCRETE CROSS GUTTER
- 221-2 CONCRETE CROSS GUTTER
- 222 UTILITY BOX DETAILS
- 223 CURB FACE ADDRESS PAINTING



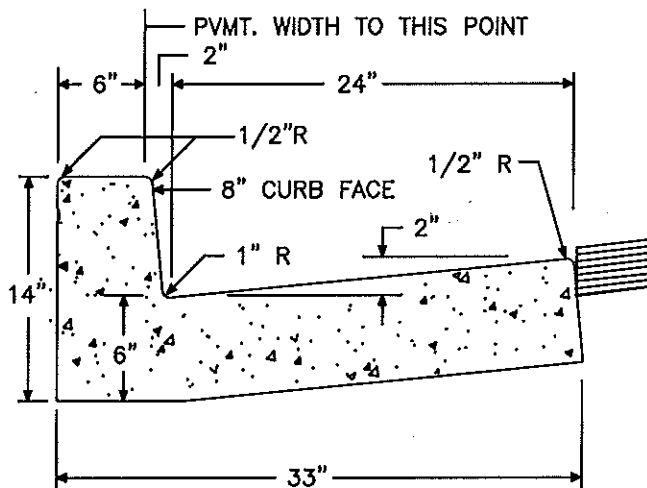
CONC. PER L.F. = .040 CU. YDS.  
1 CU. YD. = 24.8 L.F.

TYPE "A"



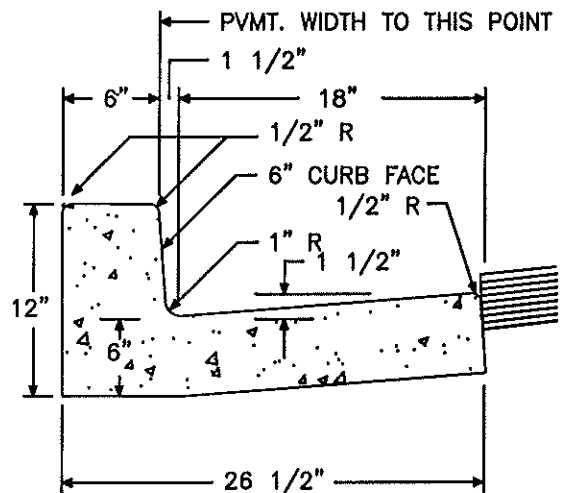
CONC. PER L.F. = .0279 CU. YDS.  
1 CU. YD. = 35.8 L.F.

TYPE "B-1"



CONC. PER L.F. = .0645 CU. YDS.  
1 CU. YD. = 15.5 L.F.

TYPE "A-2"

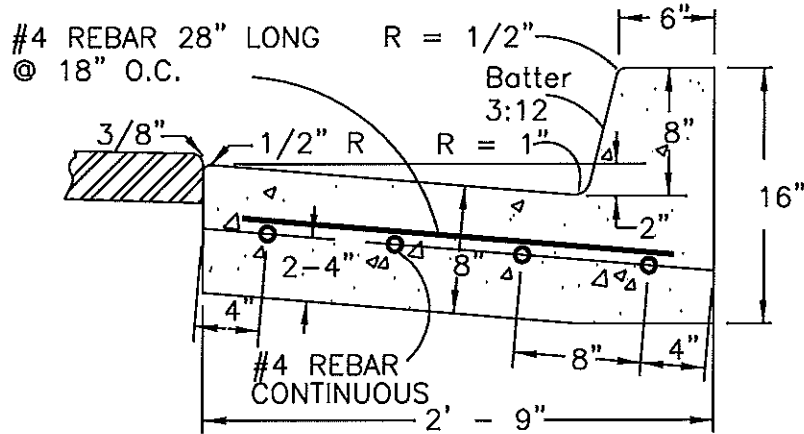


CONC. PER L.F. = .0505 CU. YDS.  
1 CU. YD. = 19.8 L.F.

TYPE "D"

NOTE: FOR UNDER SIDEWALK DRAIN SEE STANDARD PLAN 220-1.

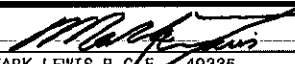
REVISIONS	<b>CITY OF FOUNTAIN VALLEY</b>	STANDARD PLAN NO.  <b>200-1</b>
	CONCRETE CURB AND GUTTER	
	 APPROVED BY: MARK LEWIS R. C. E. 49335 CITY ENGINEER	DATE: 06/03/03
		SHEET: 1 OF 3

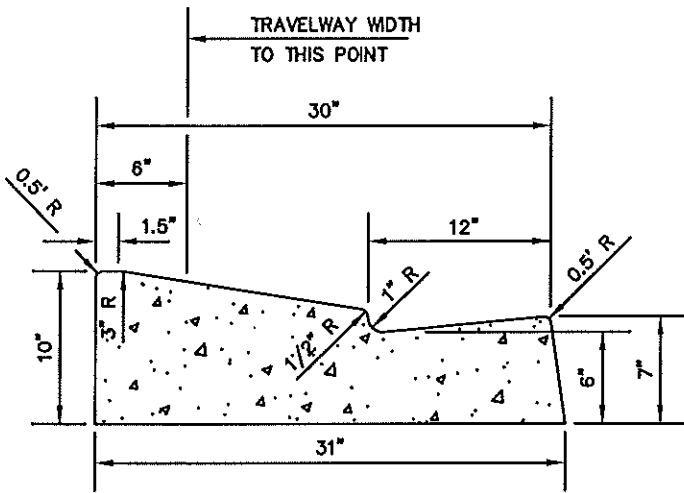


TYPE A-2-R  
8" C.F.

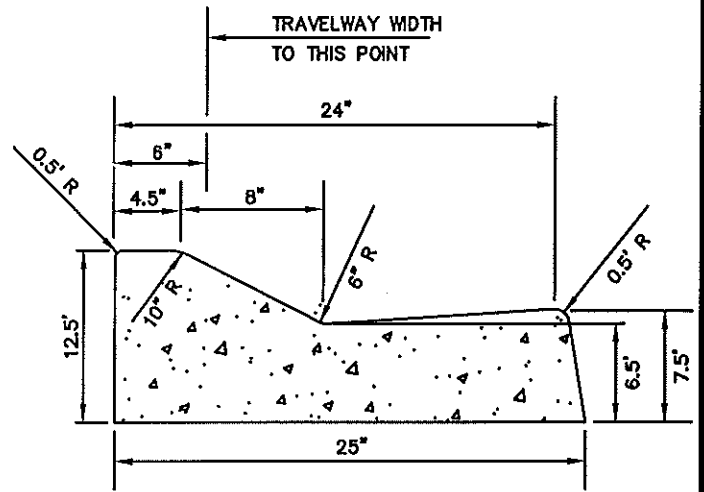
NOTES :

1. SEE STD 116 FOR TYPE OF CONCRETE.
2. CONSTRUCTION JOINTS AT 10' INTERVALS.
3. PAVEMENT SHALL BE 3/8" HIGHER THAN EDGE OF GUTTER ON TYPE "A-2" AND TYPE "D".
4. CURB AND GUTTER SHALL BE POURED MONOLITHIC.
5. REBAR SHALL BE DOWELED 1 FOOT INTO EXISTING CURB AND GUTTER ON EACH END.
6. CURB CORE DETAIL PER STANDARD 220-1.
7. CONCRETE SHALL BE 3250 PSI 3/4" ROCK TRANSIT MIX.

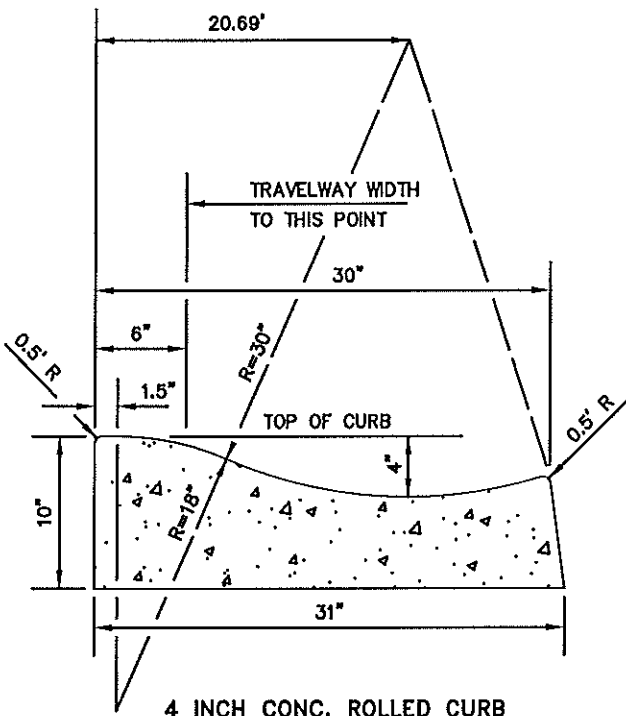
REVISIONS	<b>CITY OF FOUNTAIN VALLEY</b>	STANDARD PLAN NO.	
10/10/07			CONCRETE CURB AND GUTTER
	APPROVED BY:  MARK LEWIS R.C.E. 49335 CITY ENGINEER	DATE: 06/03/03	SHEET: 2 OF 3



**4 INCH CONC. FLARED CURB**



**6 INCH CONC. ROLLED CURB**



**4 INCH CONC. ROLLED CURB**

**NOTE:**

1. CURB CORES WILL NOT BE ALLOWED. YARD DRAINS MUST CONNECT DIRECTLY TO THE UNDERGROUND STORM DRAIN SYSTEM OR CONNECT TO THE STREET BEYOND ROLLED CURBS.
2. PAVEMENT SHALL BE 3/8 INCH HIGHER THAN EDGE OF GUTTER.

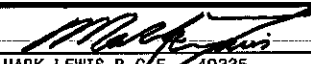
REVISIONS

**CITY OF FOUNTAIN VALLEY**

STANDARD  
PLAN NO.

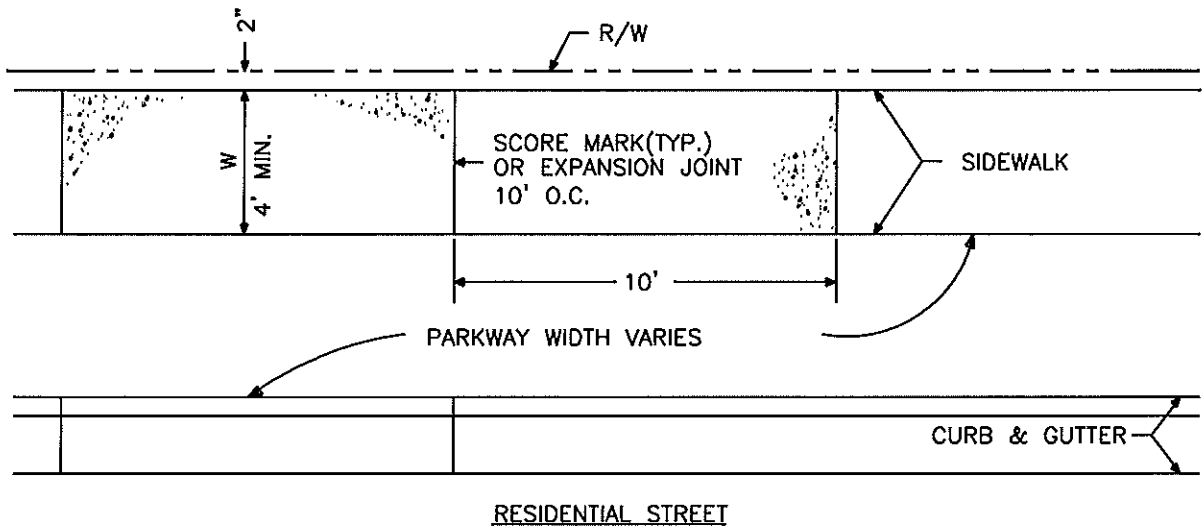
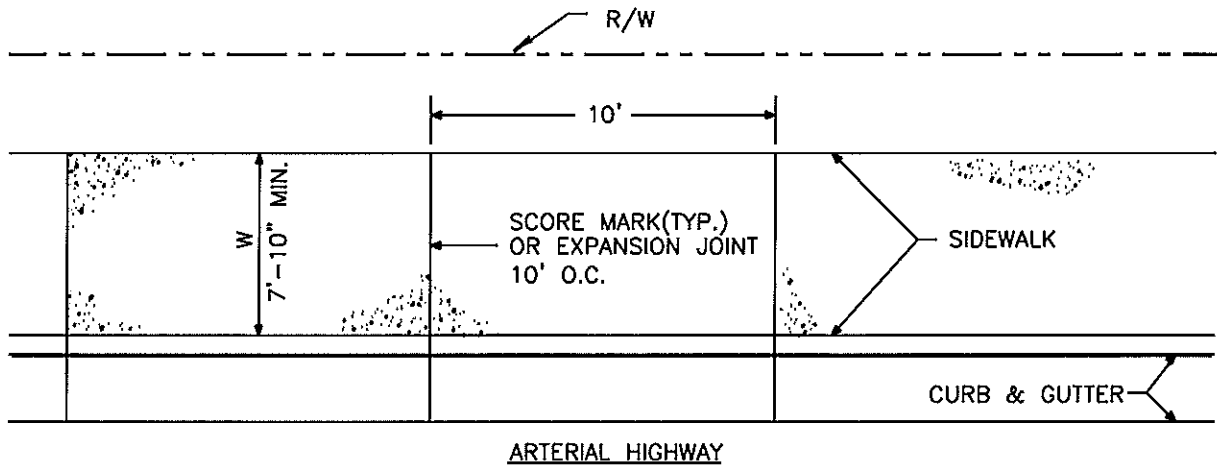
COURT WAY CURB AND GUTTER  
FOR PRIVATE STREET ONLY

**200-3**

APPROVED BY:  MARK LEWIS R.C.E. 49335  
CITY ENGINEER

DATE: 06/03/03

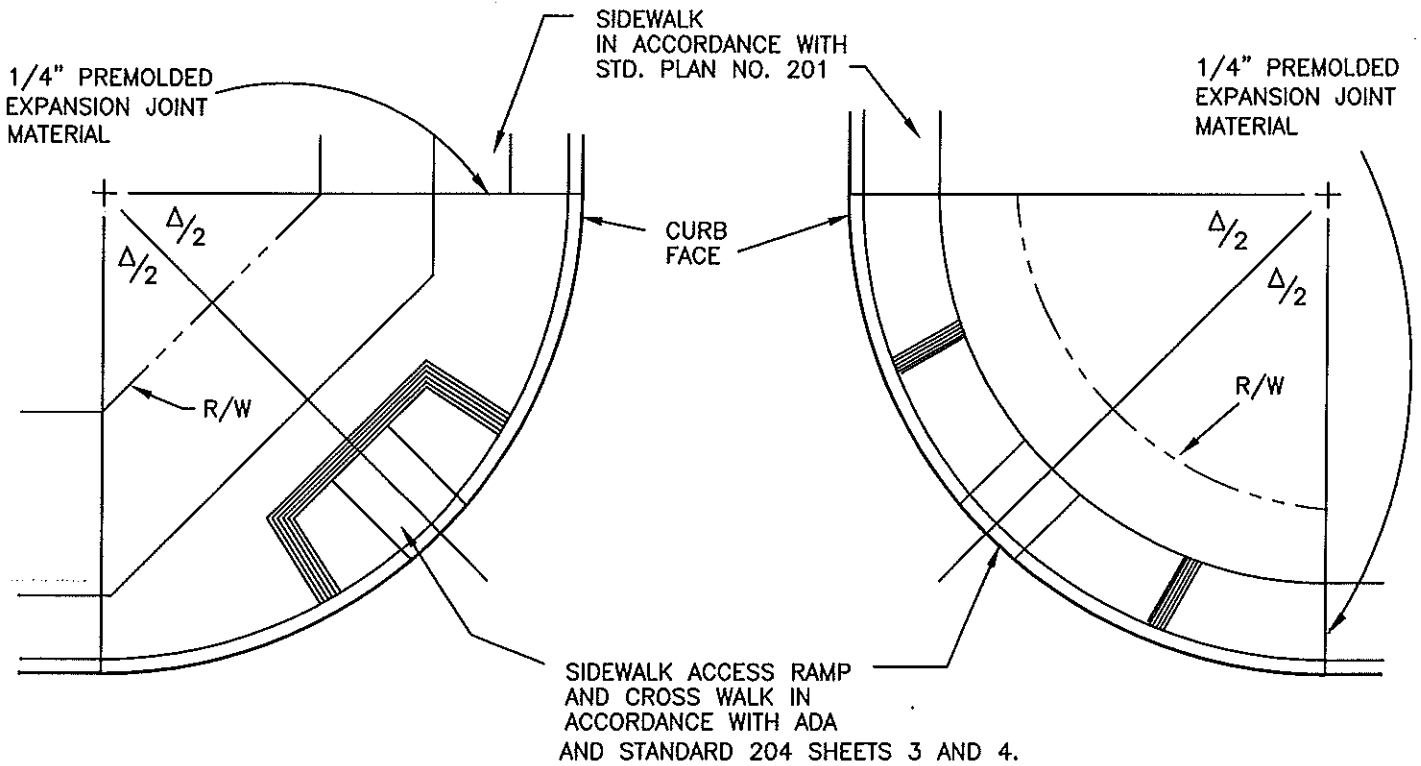
SHEET: 3 OF 3



**NOTES :**

1. THICKNESS OF SIDEWALK SHALL BE 4" EXCEPT IN DRIVEWAY APRONS (STD. No. 205).
2. CURB AND GUTTER SHALL HAVE 1/4" PREMOLDED EXPANSION JOINTS AT THE ENDS OF CURB RETURNS AND 1-1/2" DEEP WEAKENED PLANE JOINTS AT INTERVALS SHOWN HEREON. JOINTS SHALL HAVE EDGES WITH 1/8" RADII.
3. SEE SIDEWALK RETURN (STD. No. 202) AND DRIVEWAY STANDARDS (STD. No. 205 & 206) FOR ADDITIONAL EXPANSION JOINT REQUIREMENTS.
4. SIDEWALK SHALL BE PORTLAND CEMENT CONCRETE IN ACCORDANCE WITH STANDARD NO. 116.
5. ALL SOILS SHALL BE BROUGHT TO MAXIMUM SATURATION OR AS INDICATED IN THE APPROVED SOILS REPORT.
6. PRE-EMERGENT WEEDKILLER MUST BE APPLIED PRIOR TO CONSTRUCTION OF SIDEWALK.
7. SEE STD. No. 218 FOR MOISTURE BARRIER REQUIREMENTS.
8. SUBGRADE SHALL BE COMPACTED TO A MINIMUM OF 90 % RELATIVE COMPACTION.

REVISIONS	<b>CITY OF FOUNTAIN VALLEY</b>	STANDARD PLAN NO.  <b>201</b>
06/03/09	<b>SIDEWALK DETAILS</b>	
APPROVED BY:	MARK LEWIS R.C.E. 49335 CITY ENGINEER	DATE: 06/03/03
		SHEET: 1 OF 1



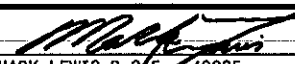
STRAIGHT CORNER CUT-OFF

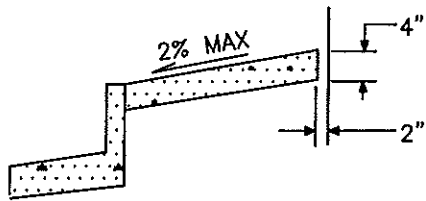
RADIUS CORNER CUT-OFF

CURB RET. RAD.	APPLICATION
25'	LOCAL STREET INTERSECTING ANOTHER LOCAL STREET
35'	ALL OTHER INTERSECTIONS

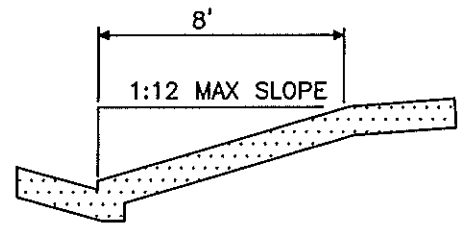
NOTES :

1. RADIUS CORNER CUT-OFF MAY BE ALLOWED AT LOCAL TO LOCAL STREET INTERSECTIONS. ANY INTERSECTION WITH AN ARTERIAL HIGHWAY SHALL HAVE A STRAIGHT CORNER CUT-OFF.
2. IF DISTANCE BETWEEN BACK OF SIDEWALK AND R/W IS 3'-0" OR LESS, EXTEND LANDING TO EDGE OF RIGHT-OF-WAY.

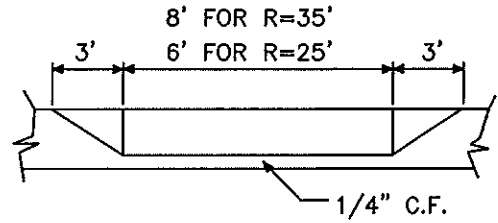
REVISIONS	<b>CITY OF FOUNTAIN VALLEY</b>	STANDARD PLAN NO.  <b>202</b>
	CURB AND SIDEWALK RETURN DETAIL	
	 APPROVED BY: MARK LEWIS R.C.E. 49335 CITY ENGINEER	DATE: 06/03/03
		SHEET: 1 OF 1



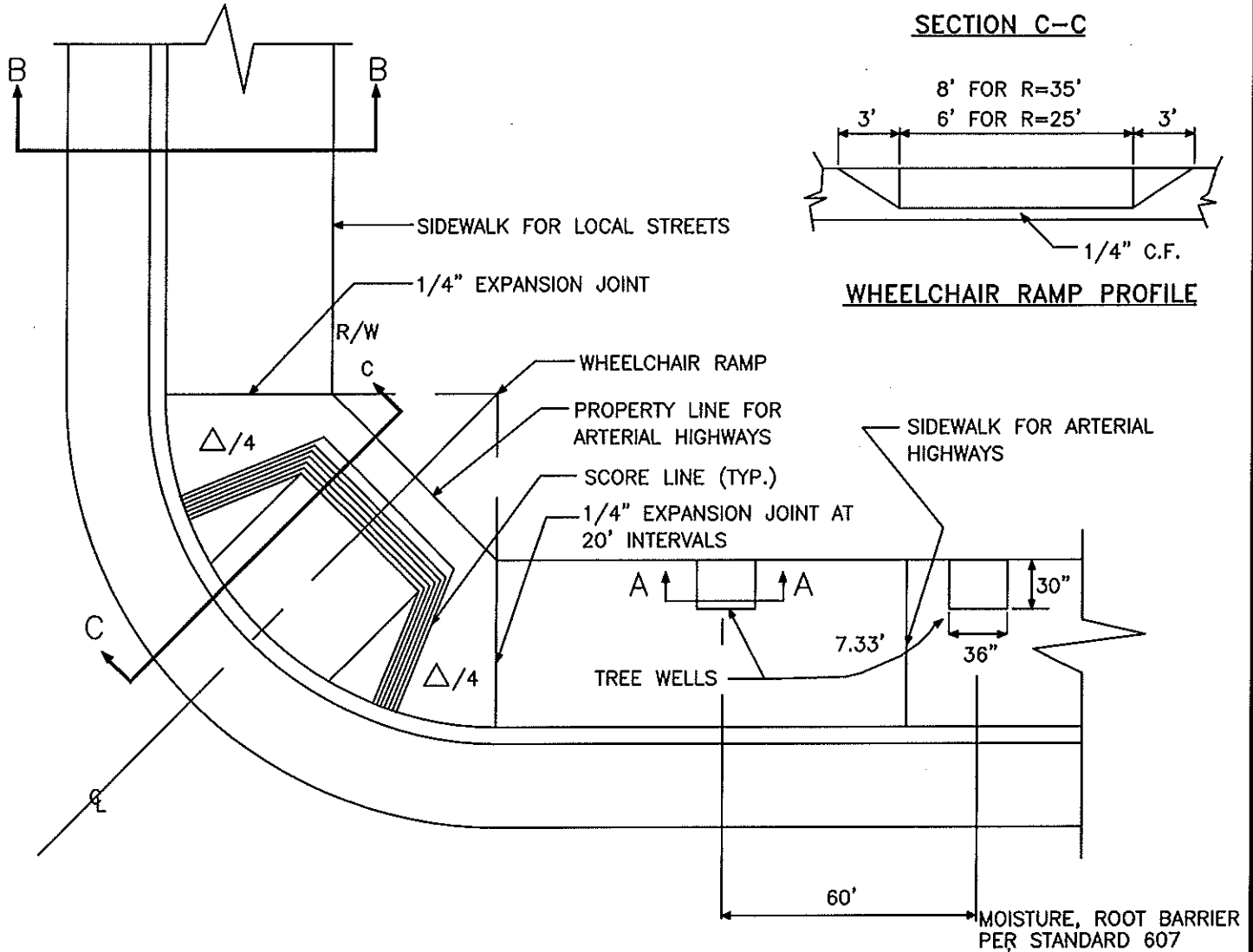
**SECTION B-B**



**SECTION C-C**

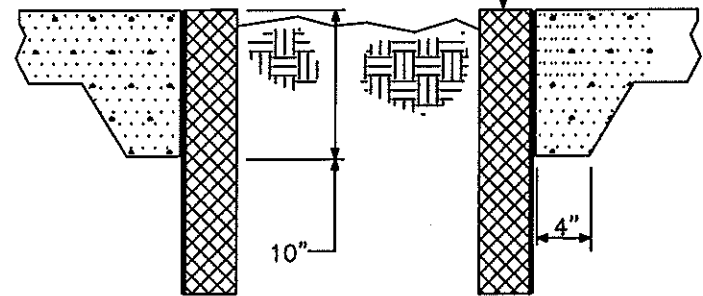


**WHEELCHAIR RAMP PROFILE**




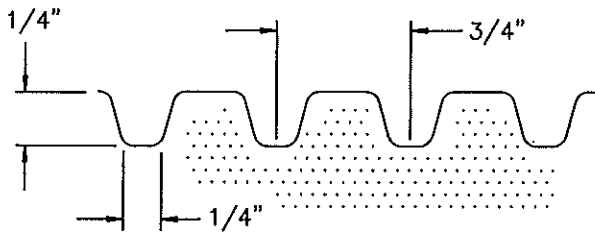
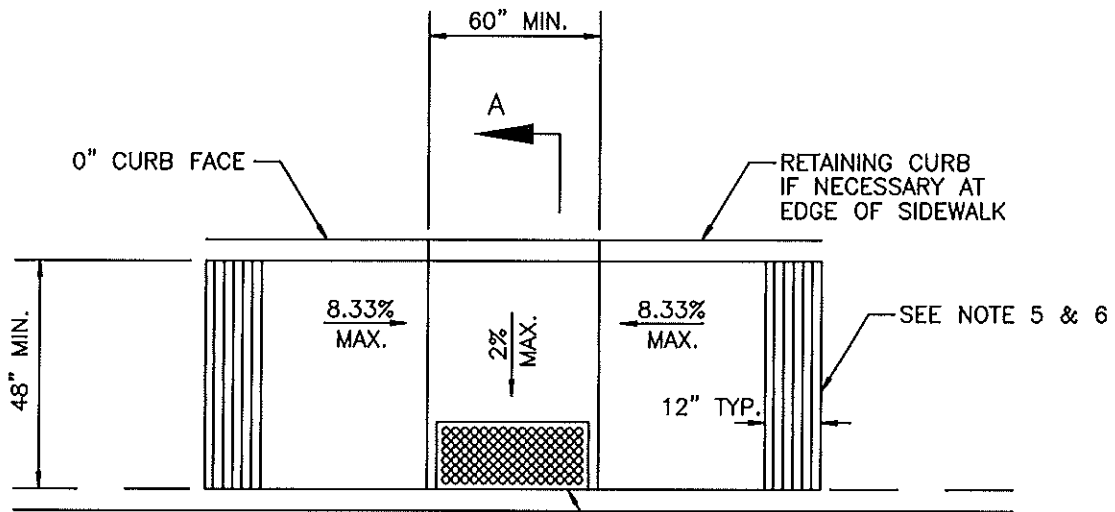
**NOTES:**

1. CONCRETE SHALL BE PER STD 116.
2. ADJUSTABLE CONTROL JOINTS ON RADIAL LINES. QUICK JOINTS OR APPROVED EQUAL MAY BE USED ON 10' INTERVALS, EXCEPT BCR AND ECR- USE EXPANSION MATERIALS.

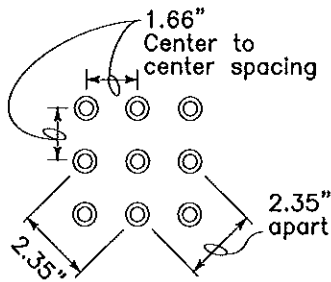


**SECTION A-A**

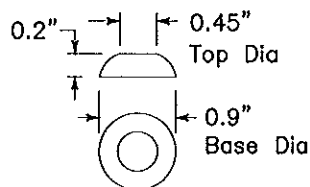
REVISIONS	<b>CITY OF FOUNTAIN VALLEY</b>		STANDARD PLAN NO.  <b>203</b>
	<b>SIDEWALK LANDING AND CURB RETURN</b>		
	 APPROVED BY: <b>MARK LEWIS R.C.E. 49335</b> CITY ENGINEER		DATE: 06/03/03
			SHEET: 1 OF 1



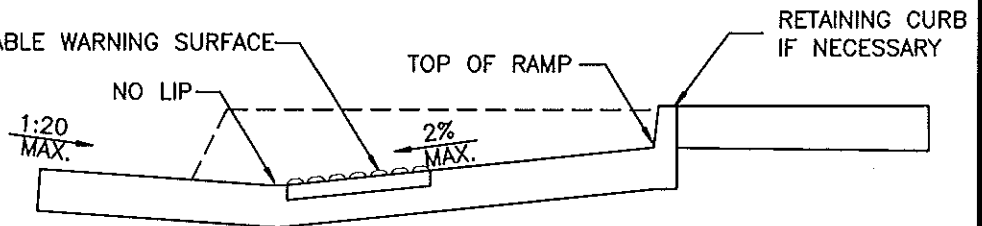
**GROOVING DETAIL**



**RAISED TRUNCATED DOME PATTERN (IN-LINE)**



**RAISED TRUNCATED DOME**



**SECTION A-A**

**NOTES:**

1. CURB RAMP SHALL HAVE A 24-INCH X 48-INCH YELLOW DETECTABLE WARNING SURFACE. DETECTABLE WARNING SURFACE SHALL CONFORM TO THE DETAILS SHOWN ON THIS PLAN.
2. WARNING SURFACES SHALL BE ARMOR-TILE PART NO. (ADA-C-2448) OR APPROVED EQUAL.
3. THE EDGE OF THE DETECTABLE WARNING SURFACE NEAREST THE STREET SHALL BE BETWEEN 6" AND 8" FROM GUTTER FLOW LINE.
4. IF LOCATED ON A CURVE THE SIDES OF THE RAMP NEED NOT BE PARALLEL, BUT THE MINIMUM WIDTH OF THE RAMP SHALL BE 4 FEET.
5. THE RAMP SHALL HAVE A 12-INCH WIDE BORDER WITH 1/4-INCH GROOVES APPROXIMATELY 3/4-INCH O.C. SEE GROOVING DETAIL.
6. THE RAMP SHALL HAVE A TRANSVERSE BROOMED SURFACE TEXTURE ROUGHER THAN THE SURROUNDING SIDEWALK (MEDIUM TO ROUGH BROOM FINISH).

REVISIONS

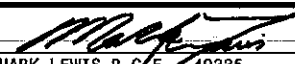
06/08/06

**CITY OF FOUNTAIN VALLEY**

**CURB RAMP CASE A  
MID-BLOCK LOCATION**

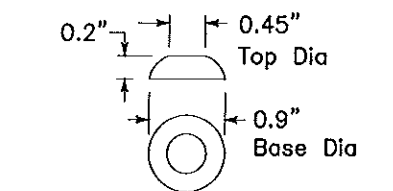
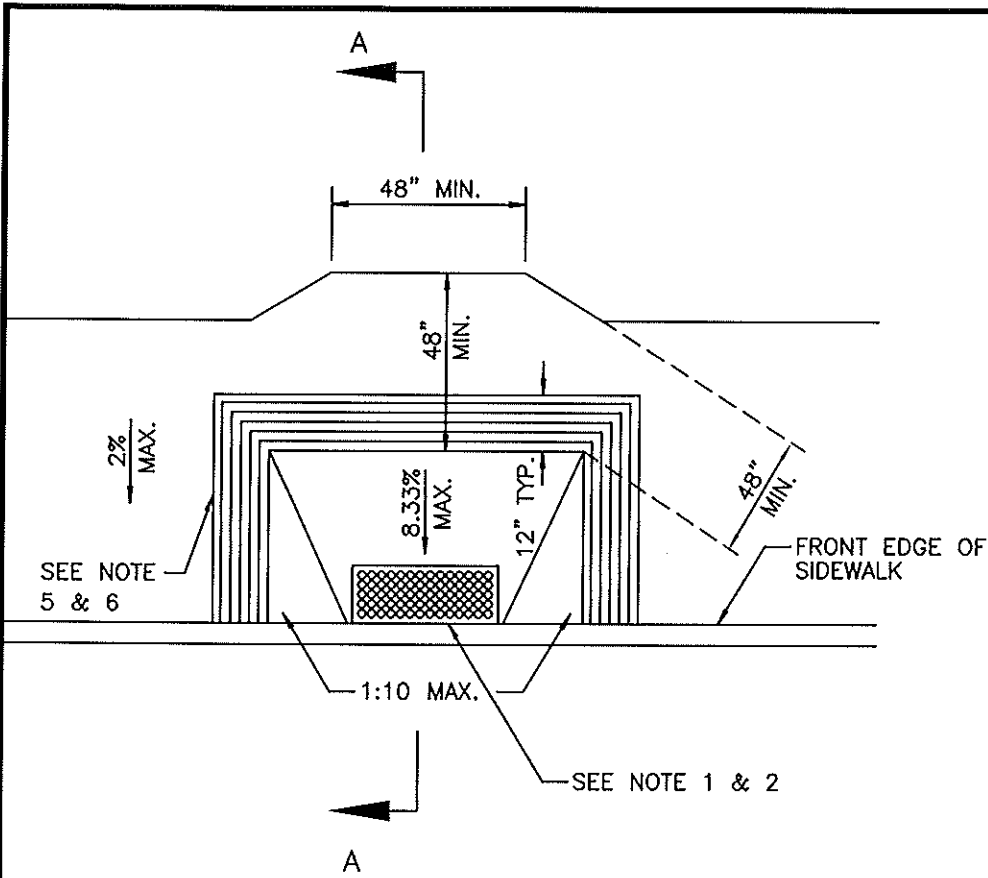
STANDARD  
PLAN NO.

**204-1**

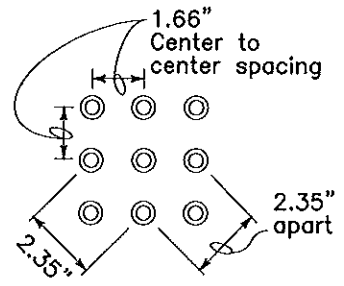
APPROVED BY:  49335  
CITY ENGINEER

DATE: 06/03/03

SHEET: 1 OF 5



**RAISED TRUNCATED DOME**



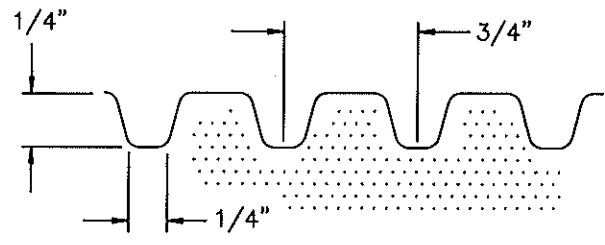
**RAISED TRUNCATED DOME PATTERN (IN-LINE)**

SEE NOTE 5 & 6

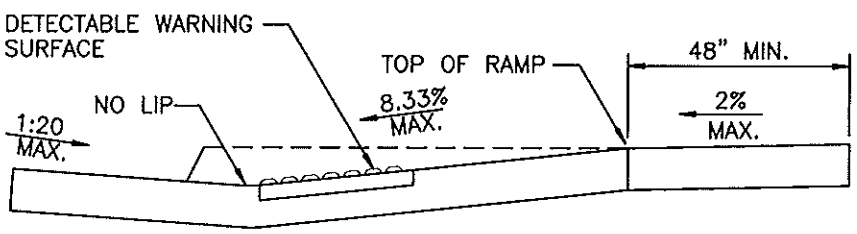
SEE NOTE 1 & 2

**NOTES:**

1. CURB RAMPS SHALL HAVE A 24-INCH X 48-INCH YELLOW DETECTABLE WARNING SURFACE. DETECTABLE WARNING SURFACE SHALL CONFORM TO THE DETAILS SHOWN ON THIS PLAN.
2. WARNING SURFACES SHALL BE ARMOR-TILE PART NO. (ADA-C-2448) OR APPROVED EQUAL.
3. THE EDGE OF THE DETECTABLE WARNING SURFACE NEAREST THE STREET SHALL BE BETWEEN 6" AND 8" FROM GUTTER FLOW LINE.
4. IF LOCATED ON A CURVE THE SIDES OF THE RAMP NEED NOT BE PARALLEL, BUT THE MINIMUM WIDTH OF THE RAMP SHALL BE 4 FEET.
5. THE RAMP SHALL HAVE A 12-INCH WIDE BORDER WITH 1/4-INCH GROOVES APPROXIMATELY 3/4-INCH O.C. SEE GROOVING DETAIL.
6. THE RAMP SHALL HAVE A TRANSVERSE BROOMED SURFACE TEXTURE ROUGHER THAN THE SURROUNDING SIDEWALK (MEDIUM TO ROUGH BROOM FINISH).



**GROOVING DETAIL**




**SECTION A-A NTS**

REVISIONS
06/08/06

**CITY OF FOUNTAIN VALLEY**

**CURB RAMP CASE B**

STANDARD PLAN NO.
<b>204-2</b>

APPROVED BY:   
 MARK LEWIS R.C.E. 49335  
 CITY ENGINEER

DATE: 06/03/03

SHEET: 2 OF 5

HT. OF CURB	'X' DIM. *	MIN. L DIM **
5"	4.16'	6.48'
6"	5'	7.90'
7"	5.83'	9.16'
8"	6.66'	10.58'

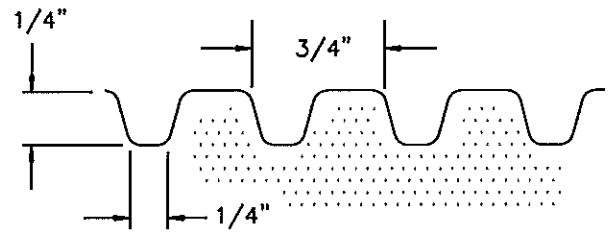
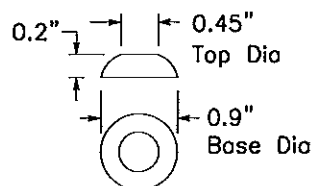
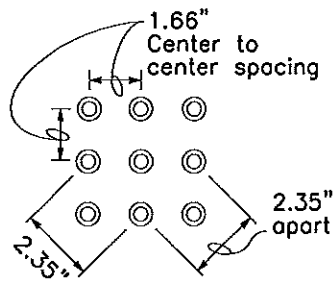
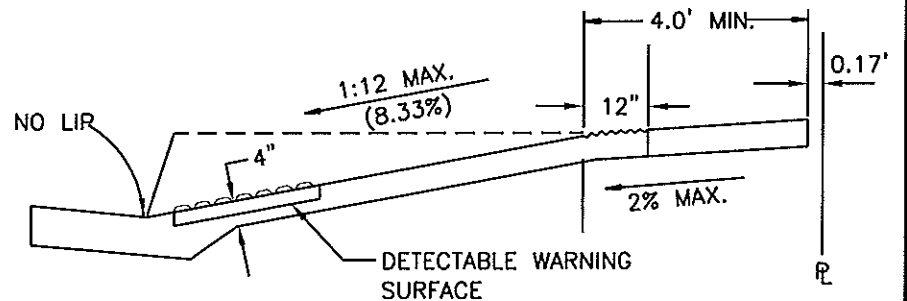
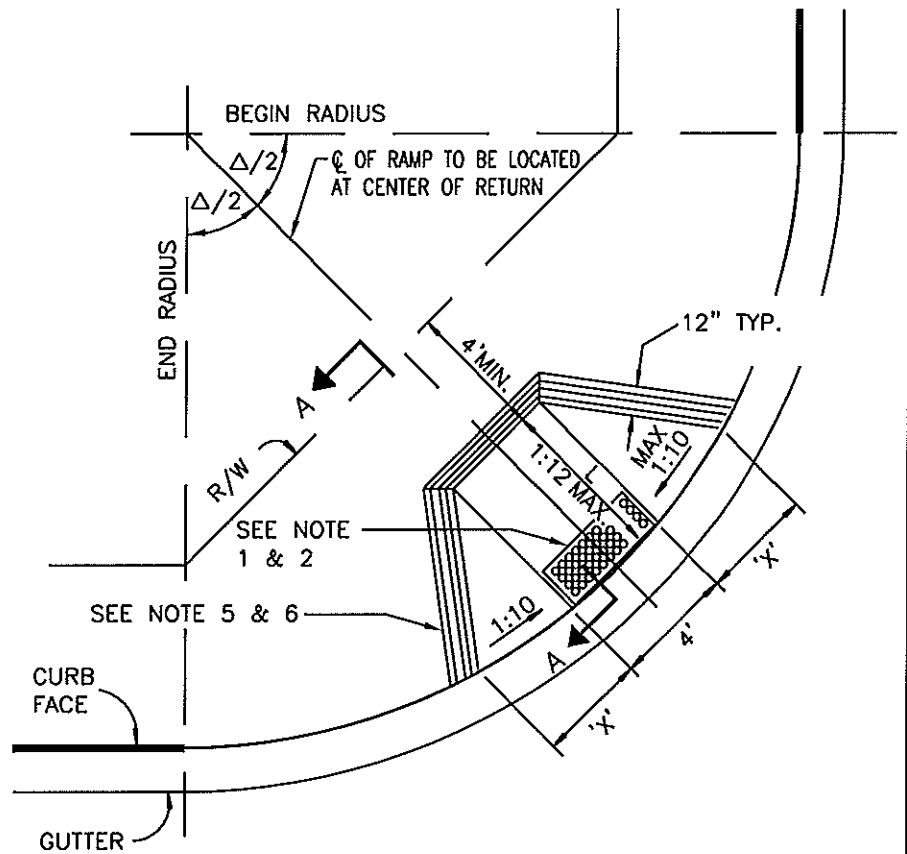
\* 'X' = CFx10

\*\* L = CF/0.0633

**NOTES:**

1. CURB RAMPS SHALL HAVE A 24-INCH X 48-INCH YELLOW DETECTABLE WARNING SURFACE. DETECTABLE WARNING SURFACE SHALL CONFORM TO THE DETAILS SHOWN ON THIS PLAN.
2. WARNING SURFACES SHALL BE ARMOR-TILE PART NO. (ADA-C-2448) OR APPROVED EQUAL.
3. THE EDGE OF THE DETECTABLE WARNING SURFACE NEAREST THE STREET SHALL BE BETWEEN 6" AND 8" FROM GUTTER FLOW LINE.
4. IF LOCATED ON A CURVE THE SIDES OF THE RAMP NEED NOT BE PARALLEL, BUT THE MINIMUM WIDTH OF THE RAMP SHALL BE 4 FEET.
5. THE RAMP SHALL HAVE A 12-INCH WIDE BORDER WITH 1/4-INCH GROOVES APPROXIMATELY 3/4-INCH O.C. SEE GROOVING DETAIL.
6. THE RAMP SHALL HAVE A TRANSVERSE BROOMED SURFACE TEXTURE ROUGHER THAN THE SURROUNDING SIDEWALK (MEDIUM TO ROUGH BROOM FINISH).

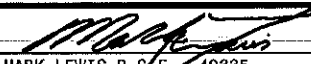
**CASE C:** TO BE USED AT INTERSECTIONS WITH CORNER CUTOFF AND SIDEWALK RETURNS.

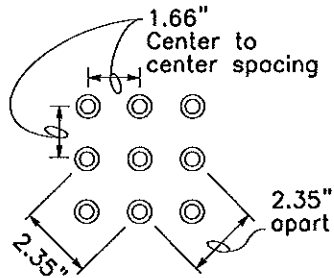


**RAISED TRUNCATED DOME PATTERN (IN-LINE)**

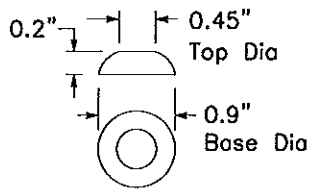
**RAISED TRUNCATED DOME**

**GROOVING DETAIL NTS**

REVISIONS	CITY OF FOUNTAIN VALLEY	STANDARD PLAN NO.
06/08/06	CURB RAMP CASE C	204-3
	APPROVED BY:  MARK LEWIS R. O.E. 49335 CITY ENGINEER	SHEET: 3 OF 5
	DATE: 06/03/03	



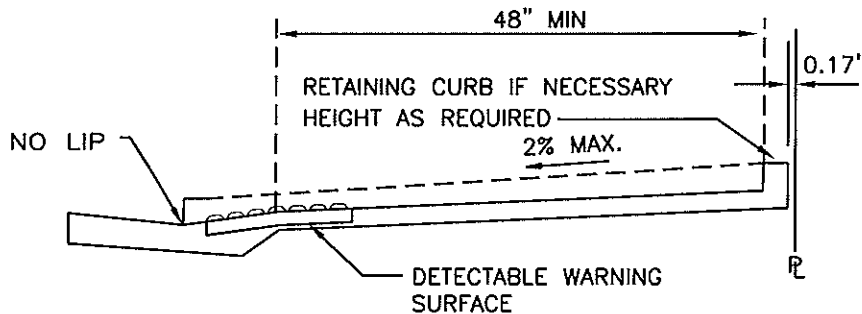
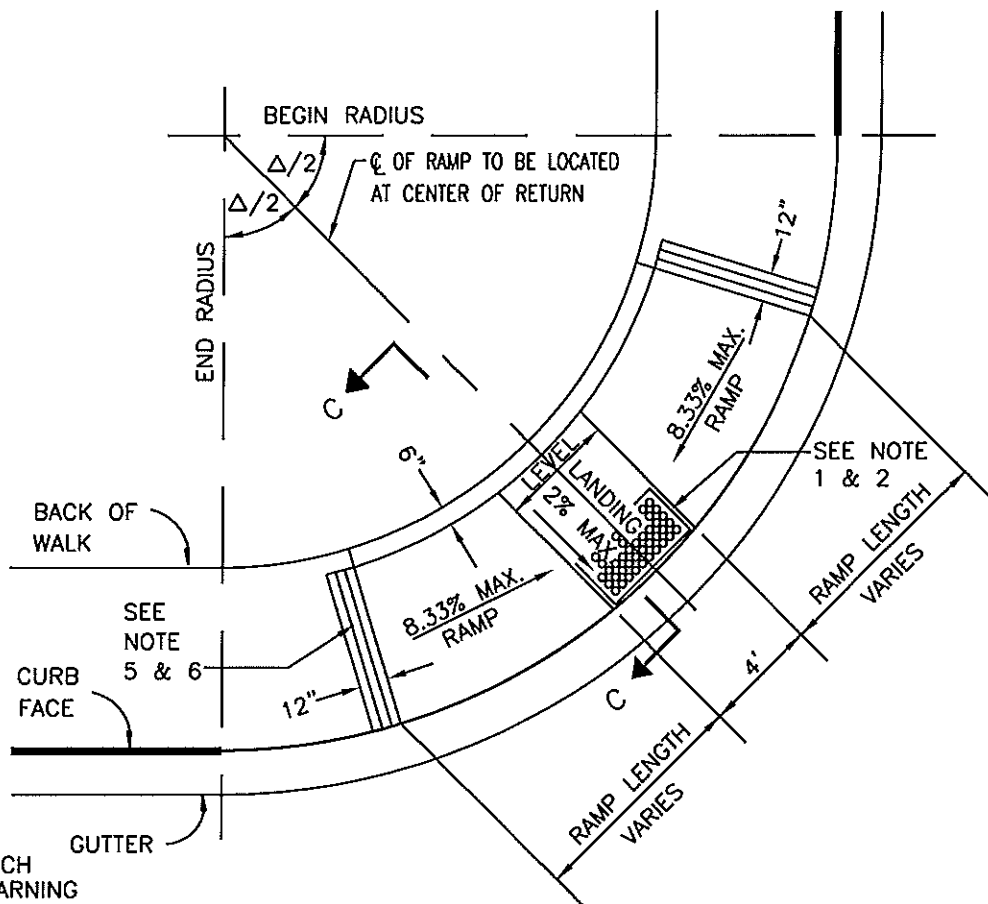
**RAISED TRUNCATED DOME  
PATTERN (IN-LINE)**



**RAISED TRUNCATED DOME**

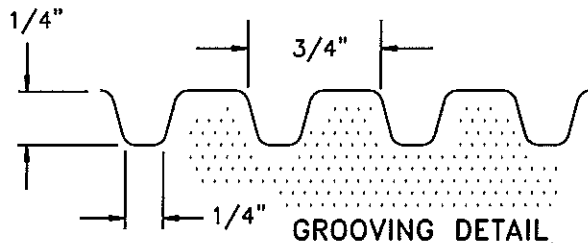
**NOTES:**

1. CURB RAMP SHALL HAVE A 24-INCH X 48-INCH YELLOW DETECTABLE WARNING SURFACE. DETECTABLE WARNING SURFACE SHALL CONFORM TO THE DETAILS SHOWN ON THIS PLAN.
2. WARNING SURFACES SHALL BE ARMOR-TILE PART NO. (ADA-C-2448) OR APPROVED EQUAL.
3. THE EDGE OF THE DETECTABLE WARNING SURFACE NEAREST THE STREET SHALL BE BETWEEN 6" AND 8" FROM GUTTER FLOW LINE.
4. IF LOCATED ON A CURVE THE SIDES OF THE RAMP NEED NOT BE PARALLEL, BUT THE MINIMUM WIDTH OF THE RAMP SHALL BE 4 FEET.
5. THE RAMP SHALL HAVE A 12-INCH WIDE BORDER WITH 1/4-INCH GROOVES APPROXIMATELY 3/4-INCH O.C. SEE GROOVING DETAIL.
6. THE RAMP SHALL HAVE A TRANSVERSE BROOMED SURFACE TEXTURE ROUGHER THAN THE SURROUNDING SIDEWALK (MEDIUM TO ROUGH BROOM FINISH).
7. MAXIMUM SLOPE OF RAMP SHALL BE 1:12 (8.33%). MINIMUM LENGTH OF RAMP SHALL BE HEIGHT OF CURB X 12.



**SECTION C-C**

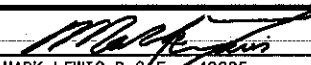
N.T.S.

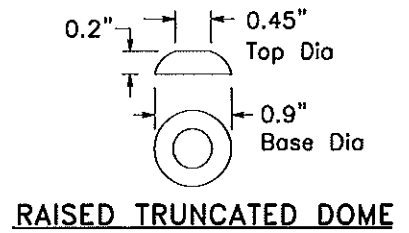
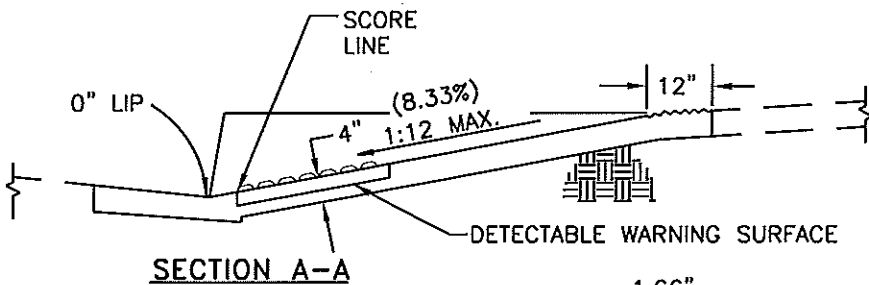


**GROOVING DETAIL**

N.T.S.

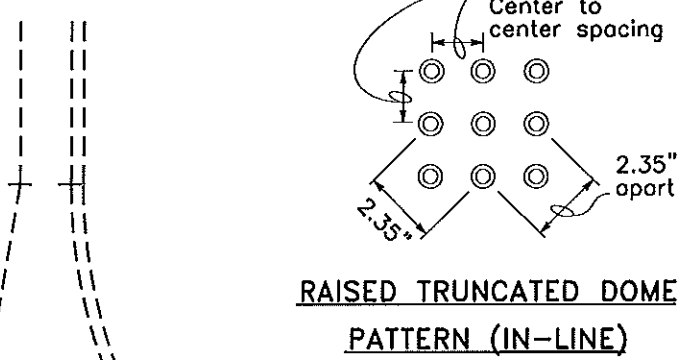
**CASE D:** TO BE USED AT INTERSECTIONS WITH RADIUS CORNER CUT OFF AND SIDEWALK RETURN.

REVISIONS	<b>CITY OF FOUNTAIN VALLEY</b>	STANDARD PLAN NO.
06/08/06	<b>CURB RAMP CASE D</b>	<b>204-4</b>
	APPROVED BY:  MARK LEWIS R.C.E. 49335 CITY ENGINEER	SHEET: 4 OF 5
	DATE: 06/03/03	

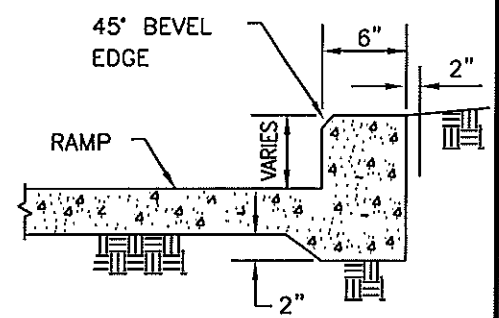


**SECTION A-A**

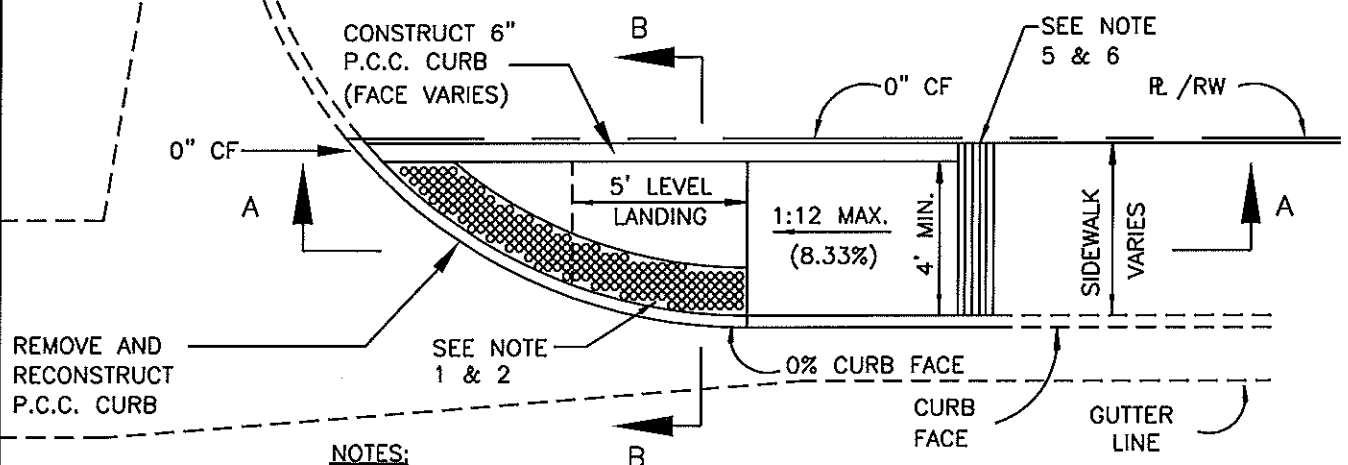
**RAISED TRUNCATED DOME**



**RAISED TRUNCATED DOME PATTERN (IN-LINE)**



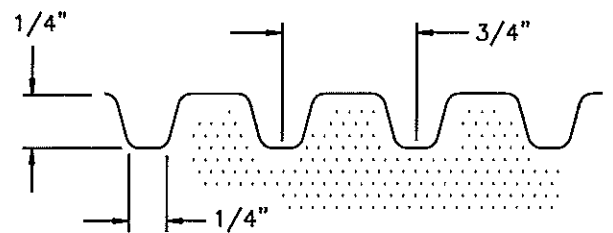
**SECTION B-B**



REMOVE AND RECONSTRUCT P.C.C. CURB

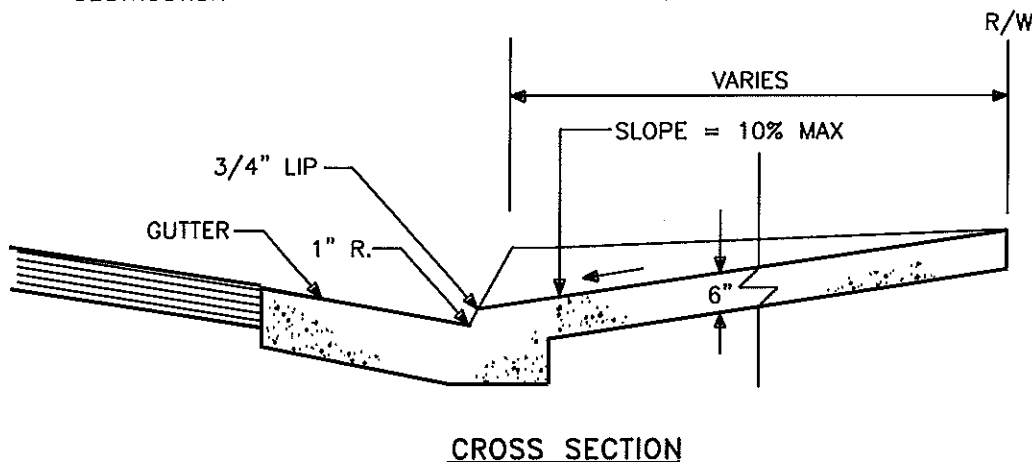
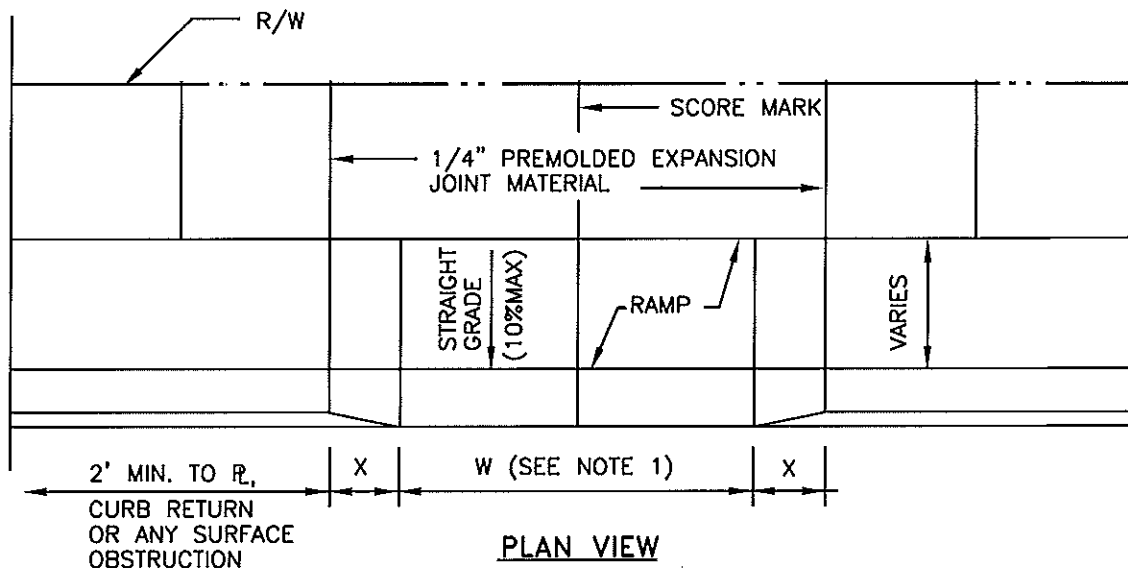
**NOTES:**

1. CURB RAMPS SHALL HAVE A 24" WIDE DETECTABLE WARNING SURFACE TO MATCH RADIUS OF CURB AND SHALL CONFORM TO THE DETAILS SHOWN ON THIS PLAN.
2. THE DETECTABLE WARNING SURFACE SHALL BE LIQUID APPLIED VANGUARD OR APPROVED EQUAL.
3. THE EDGE OF THE DETECTABLE WARNING SURFACE NEAREST THE STREET SHALL BE BETWEEN 6" AND 8" FROM GUTTER FLOW LINE.
4. IF LOCATED ON A CURVE THE SIDES OF THE RAMP NEED NOT BE PARALLEL, BUT THE MINIMUM WIDTH OF THE RAMP SHALL BE 4 FEET.
5. THE RAMP SHALL HAVE A 12-INCH WIDE BORDER WITH 1/4-INCH GROOVES APPROXIMATELY 3/4-INCH O.C. SEE GROOVING DETAIL.
6. THE RAMP SHALL HAVE A TRANSVERSE BROOMED SURFACE TEXTURE ROUGHER THAN THE SURROUNDING SIDEWALK (MEDIUM TO ROUGH BROOM FINISH).




**GROOVING DETAIL N.T.S.**

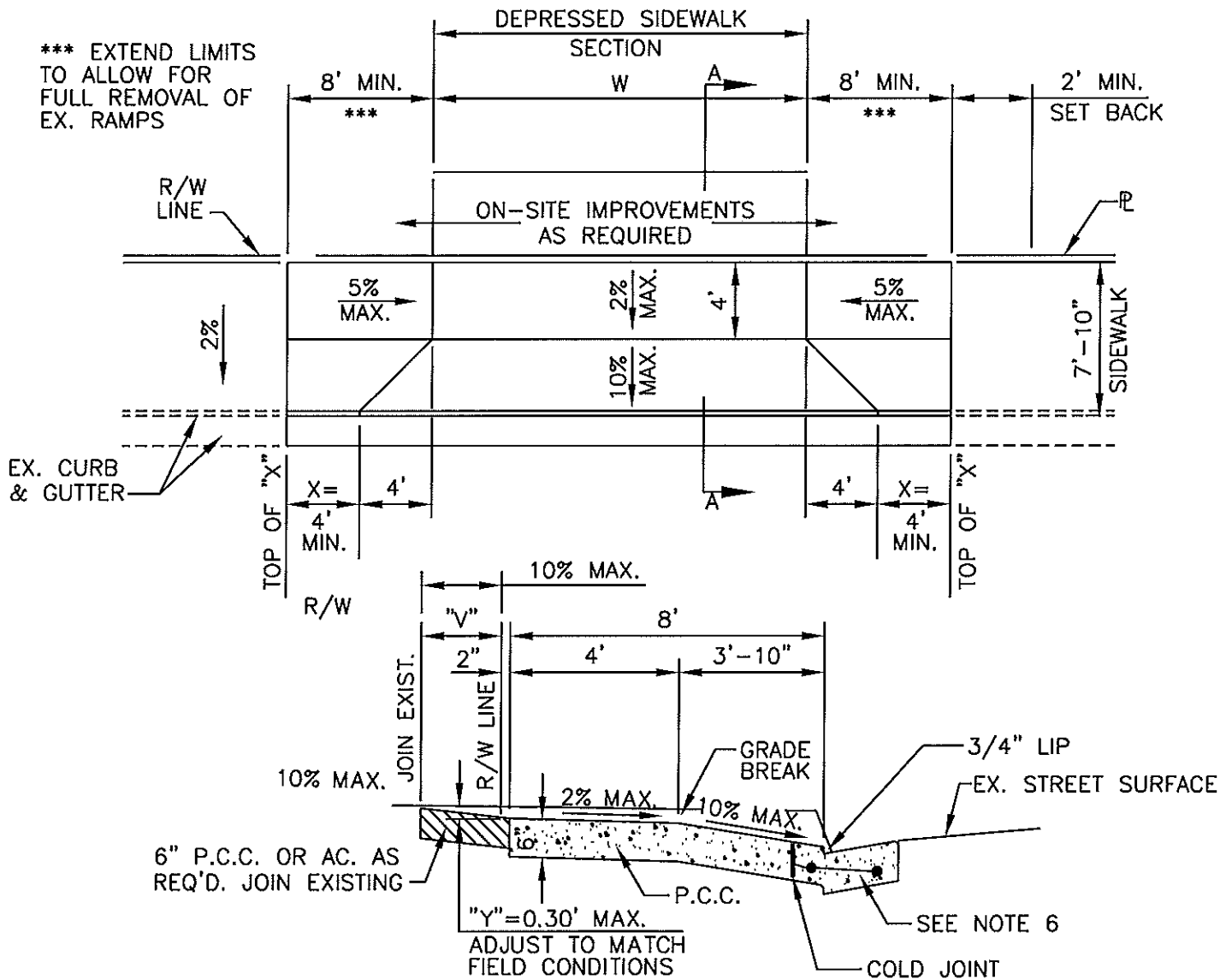
<b>REVISIONS</b>	<b>CITY OF FOUNTAIN VALLEY</b>	<b>STANDARD PLAN NO.</b>
06/08/06	<b>CURB RAMP CASE E</b>	
10/10/07		<b>204-5</b>
	 APPROVED BY: MARK LEWIS R. C. E. 49335 CITY ENGINEER	<b>SHEET: 5 OF 5</b>
	DATE: 06/03/03	



**NOTES:**

1. RESIDENTIAL DRIVE APPROACHES WITH 2 CAR GARAGES SHALL BE 20' MAX. AND RESIDENTIAL DRIVE APPROACHES WITH 3 CAR GARAGES SHALL BE 30' MAX. MINIMUM DRIVEWAY WIDTH SHALL BE 12'.
2. DRIVEWAYS SERVICING 5 OR MORE DWELLING UNITS SHALL BE 30' MIN.
3. MAXIMUM 1 DRIVE APPROACH PER STREET FRONTAGE IN RESIDENTIAL AREA.
4. WEAKENED PLANE JOINTS SHALL BE 1-1/2 INCHES DEEP WITH 1/8 INCH RADIUS EDGES.
5. CONSTRUCT SIDEWALK PER STANDARD PLAN 201.
6. RESIDENTIAL DRIVEWAYS MAY BE PLACED MONOLITHIC WITH CURB AND GUTTER OR MAY BE KEYED OR DOWELED INTO ADJACENT CURB AND GUTTER AND SIDEWALK TO THE SATISFACTION OF THE CITY INSPECTOR.
7. DRIVEWAY SHALL BE CONSTRUCTED OF PORTLAND CEMENT CONCRETE.
8. "X" SHALL BE 3 FEET.
9. DRIVEWAYS WITH "W" LESS THAN 20 FEET SHALL HAVE ONE (1) SCORE MARK AT 1/2 "W". DRIVEWAYS WITH "W" OVER 20 FEET SHALL HAVE SCORE MARKS NOT TO EXCEED 10 FEET ON CENTER.
10. SAW CUTTING IN THE GUTTER FLOW LINE TO REMOVE THE CURB SHALL NOT BE ALLOWED.
11. FOR NEW DRIVEWAY CONSTRUCTION ON EXISTING STREETS, ASPHALT REPAIR SHALL CONFORM TO STANDARD PLAN NO. 120.
12. TO CONSTRUCT A DEPRESSION IN EXISTING CURB & GUTTER, HORIZONTAL SAW CUT AND REMOVE CURB AS NECESSARY.
13. SUBGRADE SHALL BE COMPACTED TO A MINIMUM OF 90 % RELATIVE COMPACTION.

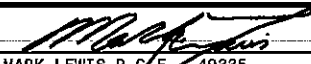
REVISIONS	<b>CITY OF FOUNTAIN VALLEY</b>	STANDARD PLAN NO.  <b>205</b>
06/08/06	RESIDENTIAL DRIVE APPROACH	
06/03/09		
APPROVED BY:	 MARK LEWIS R.C.E. 49335 CITY ENGINEER	DATE: 06/03/03
		SHEET: 1 OF 1

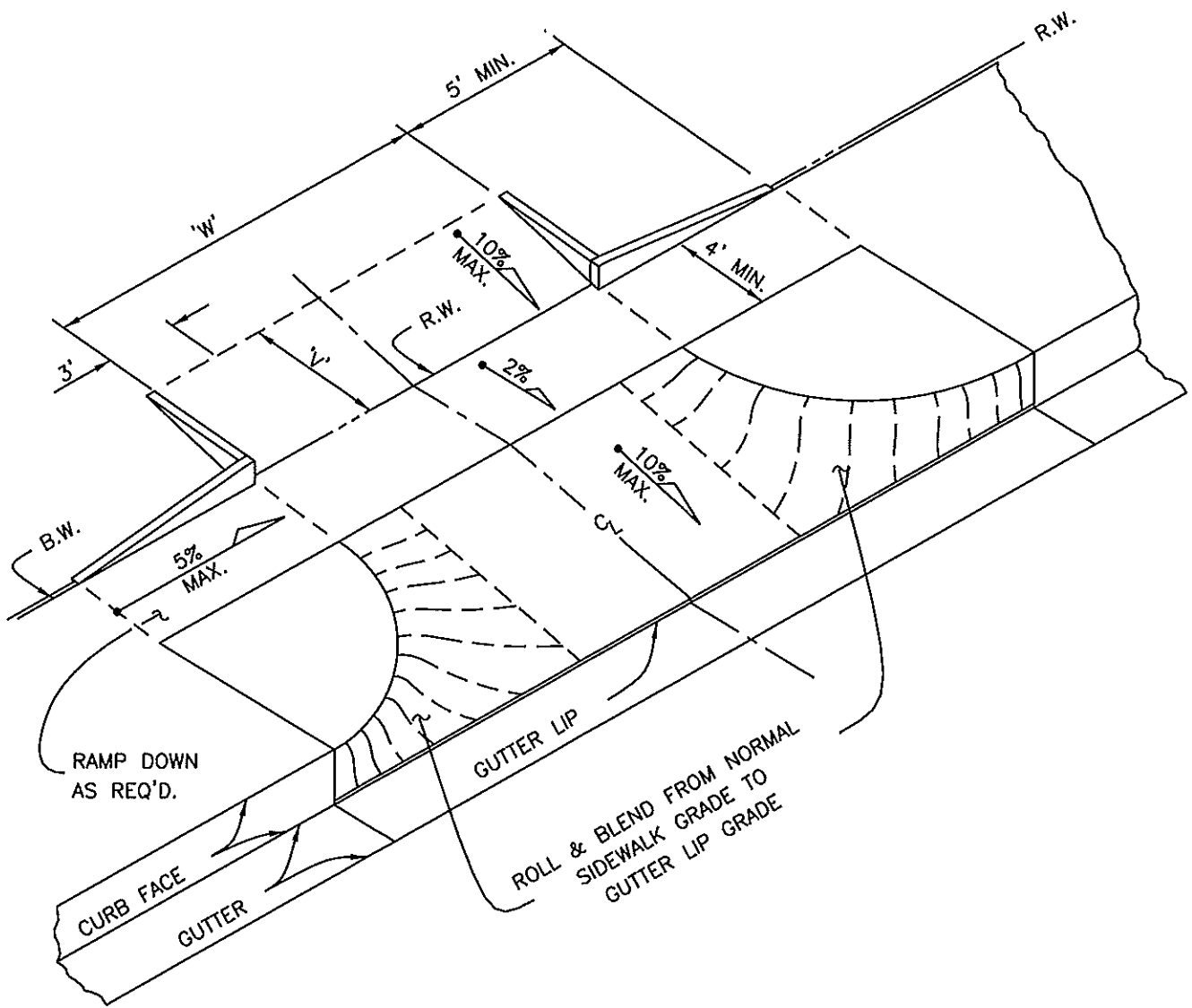


**SECTION A-A**  
N.T.S.

**NOTES:**

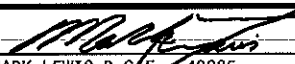
1. DRIVEWAY SHALL BE CLASS 560-C-3250 PCC.
2. "V" DIMENSION SHALL BE 2' MINIMUM & ESTABLISHED IN FIELD BASED ON "Y" DEPTH REQUIRED.
3. REPLACE EX. "CURB RETURN" TYPE DWY WITH "DUST PAN" TYPE DWY
4. A COURSE BROOM FINISH TRANSVERSE TO THE LINE OF TRAFFIC SHALL BE USED ON THE APPROACH OTHER THAN THE CURB AND GUTTER AREA. THE CURB AND GUTTER AREA SHALL HAVE A LIGHT BROOM FINISH PARALLEL TO THE LINE OF TRAFFIC.
5. VERTICAL OBJECTS SUCH AS FIRE HYDRANTS AND POWER POLES SHALL BE A MINIMUM OF 5' FROM THE TOP OF "X".
6. INSTALL REBAR PER STANDARD PLAN 200-2.

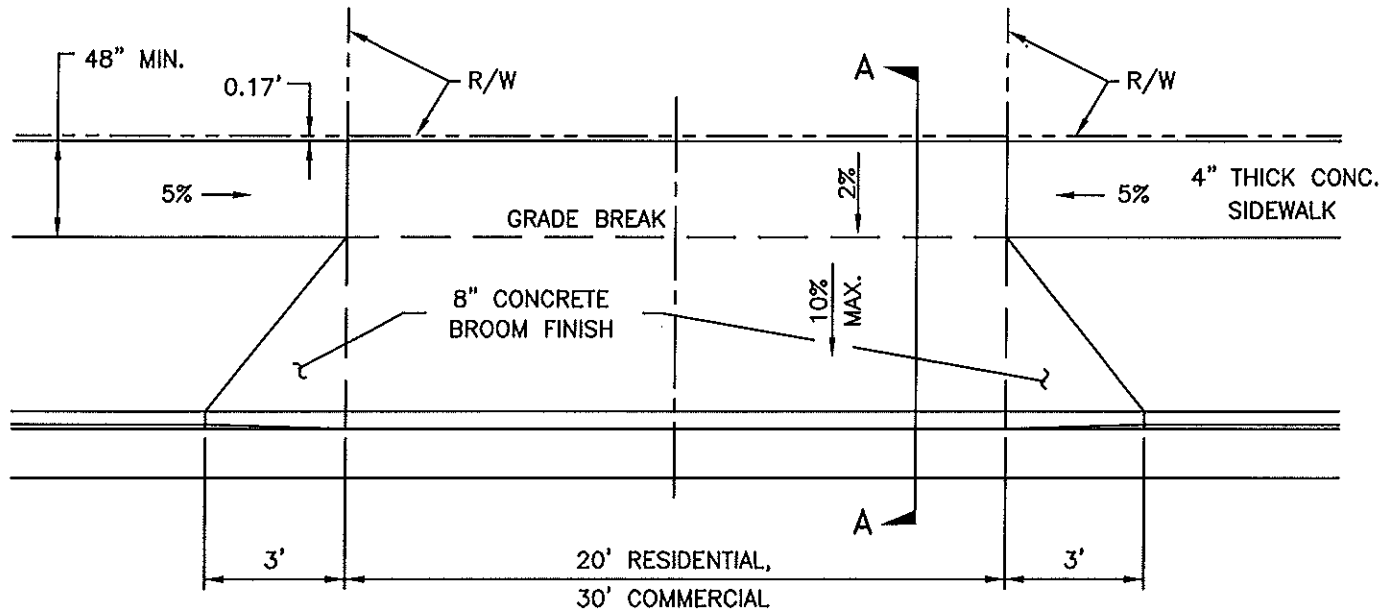
REVISIONS	<b>CITY OF FOUNTAIN VALLEY</b>	STANDARD PLAN NO.		
06/08/06			COMMERCIAL AND INDUSTRIAL DRIVE APPROACH	<b>206-1</b>
10/10/07				
 APPROVED BY: MARK LEWIS R.C.E. 49335 CITY ENGINEER		DATE: 06/03/03		
SHEET: 1 OF 2				



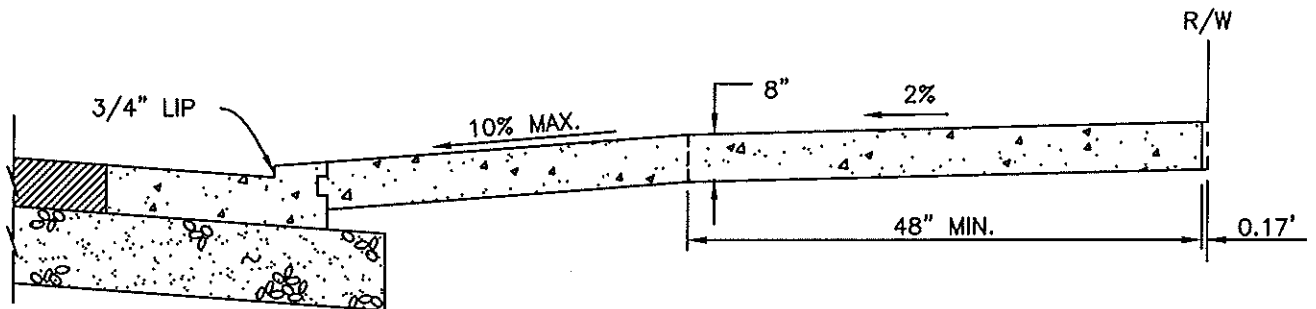
SPECIFICATION FOR LOCATION OF DRIVEWAYS:

1. 'W'=27' MINIMUM TO 45' MAXIMUM WIDTH.
2. TOTAL DRIVEWAY WIDTHS SHALL NOT EXCEED 70% OF THE FRONTAGE.
3. THE SAME PARCEL SHALL HAVE 24" MINIMUM OF FULL WIDTH CURB BETWEEN DRIVEWAYS.
4. ALL PLANNED DRIVEWAY OPENINGS SHALL BE SUBMITTED TO THE DEPARTMENT OF PUBLIC WORKS, ENGINEERING DIVISION, FOR REVIEW AND APPROVAL. THE NUMBER OF DRIVEWAY OPENINGS SHALL BE NO MORE THAN ARE NEEDED TO ADEQUATELY SERVE THE PARCEL.
5. SEE STD. PLAN 206, SHEET 1 of 2, FOR DIMENSION AND SECTION DETAILS.

REVISIONS	<b>CITY OF FOUNTAIN VALLEY</b>	STANDARD PLAN NO.
10/10/07		
	COMMERCIAL AND INDUSTRIAL DRIVE APPROACH	<b>206-2</b>
	 APPROVED BY: MARK LEWIS R.C.E. 49335 CITY ENGINEER	DATE: 06/03/03
		SHEET: 2 OF 2



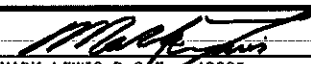
PLAN



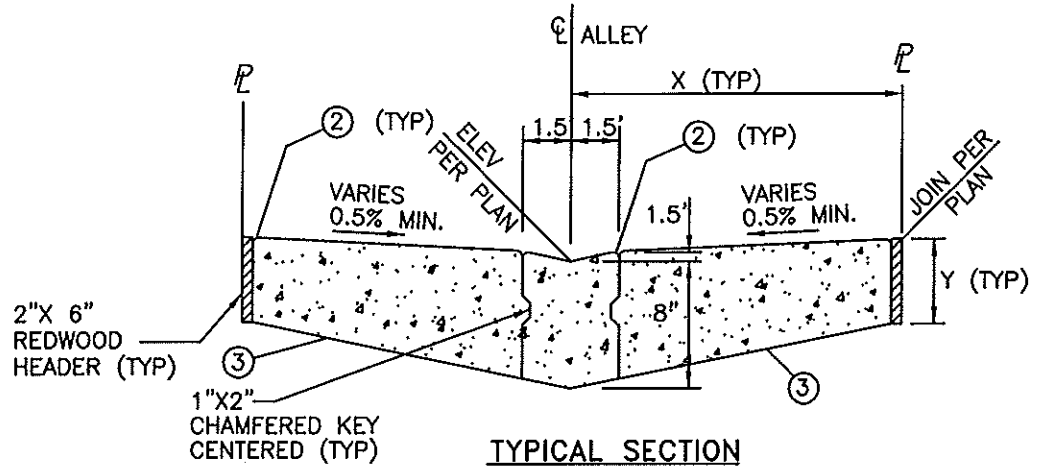
SECTION A-A NEW CONSTRUCTION

NOTES:

1. BACK OF DRIVEWAY CAN BE DEPRESSED A MAX. OF 2" FOR 8" C.F.

REVISIONS	<b>CITY OF FOUNTAIN VALLEY</b>		STANDARD PLAN NO.  <b>207</b>
	ALLEY APPROACH		
	 APPROVED BY: MARK LEWIS R.C.E. 49335 CITY ENGINEER		
	DATE: 06/03/03		
			SHEET: 1 OF 1

X	Y
7.5'	6.25"
10'	5.5"

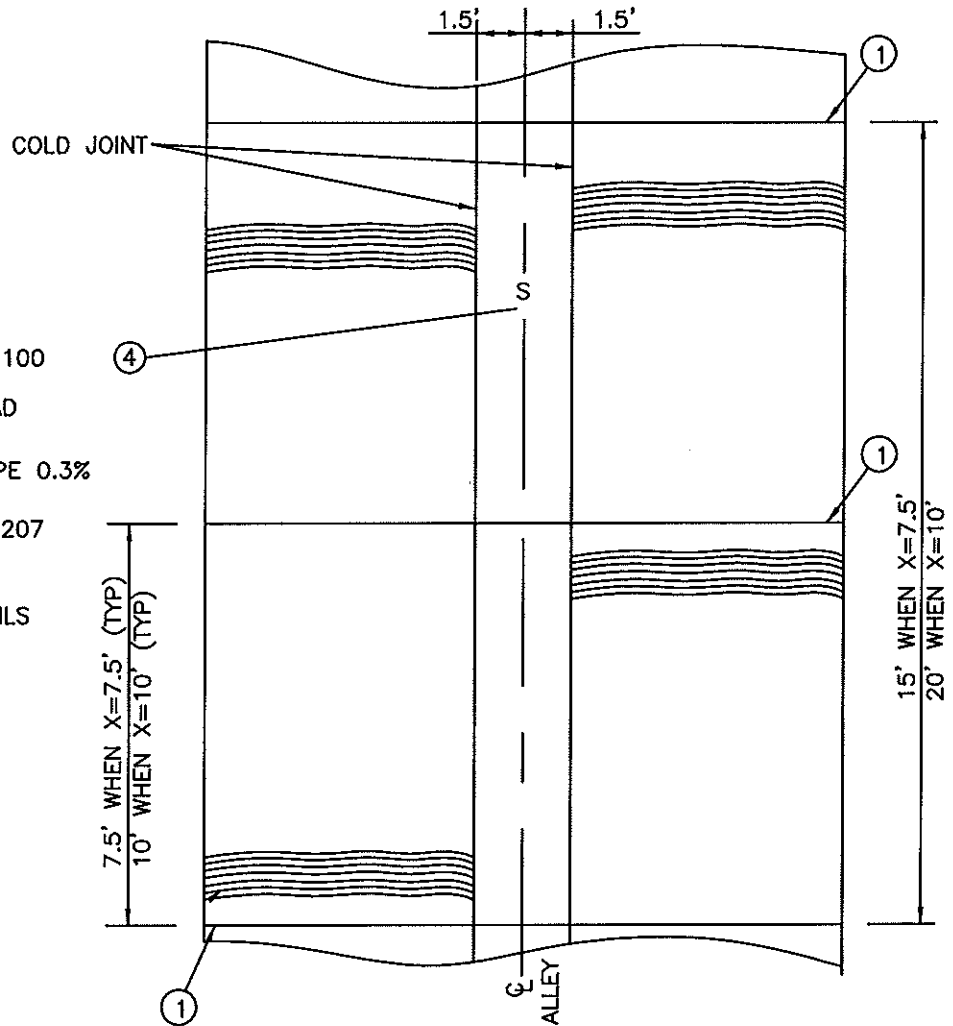


**NOTES:**

- ① WEAKENED PLANE OR QUICK JOINT
- ② 1/2" RAD TROWEL (TYP)
- ③ STRAIGHT GRADE
- ④ STEEL TROWEL FINISH
- ⑤ COARSE BROOM FINISH

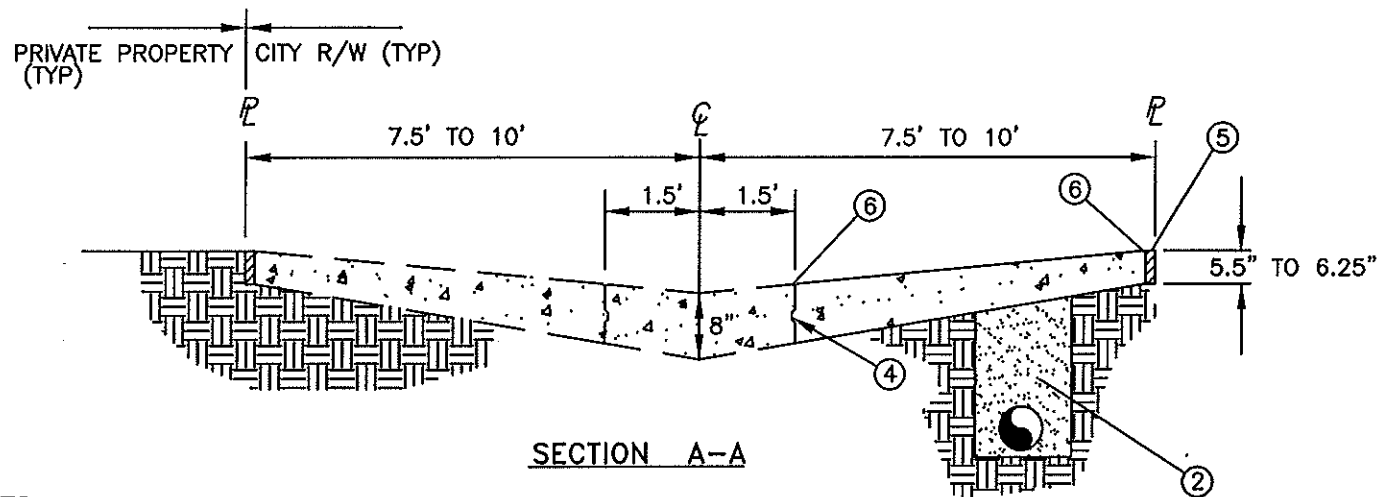
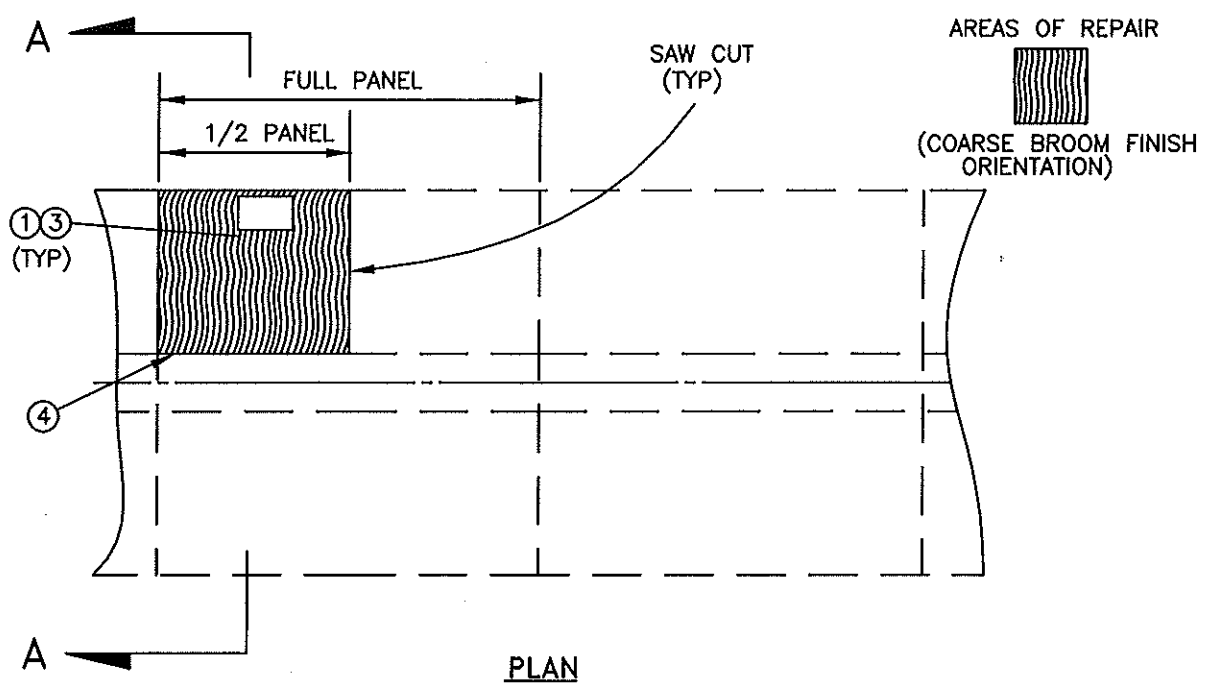
**GENERAL NOTES:**

- 1. REFER TO STANDARD PLAN 100
- 2. STRIKE ALL EDGES 1/2" RAD
- 3. MINIMUM LONGITUDINAL SLOPE 0.3%
- 4. REFER TO STANDARD PLAN 207 FOR ALLEY APPROACH
- 5. FOR ALLEY APPROACH DETAILS SEE STANDARD PLAN 209.
- 6. ALLEYS SHALL NOT RECEIVE STREET DRAINAGE



**TYPICAL PLAN VIEW**  
NTS

REVISIONS	<b>CITY OF FOUNTAIN VALLEY</b>		STANDARD PLAN NO.
	CONCRETE ALLEY SECTION		
APPROVED BY:	 MARK LEWIS R.C.E. 49335 CITY ENGINEER	DATE: 06/03/03	SHEET: 1 OF 1



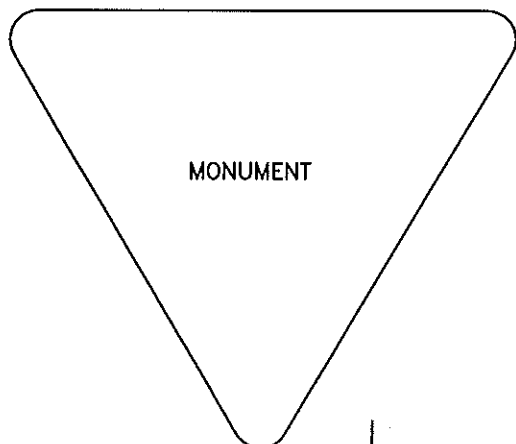
**NOTES**

- ① SAWCUT AND REMOVE CONCRETE ALLEY HALF PANEL AS SHOWN
- ② SLURRY BACKFILL ALL EXCAVATIONS TO SUB-GRADE OF CONCRETE ALLEY SECTION
- ③ PLACE AND MAINTAIN TEMPORARY ASPHALT PAVEMENT UNTIL CONCRETE PANEL IS REPLACED
- ④ PROTECT KEYWAY WHEN REMOVING A PANEL
- ⑤ CONSTRUCT 2"X 6" REDWOOD HEADER
- ⑥ 1/2" RADIUS TROWEL EDGE (TYP)

**GENERAL NOTES**

- 1. REFER TO STANDARD PLAN 100
- 2. STEEL TROWEL FINISH GUTTER VALLEY AREA
- 3. COARSE BROOM FINISH SIDE PANELS
- 4. MATCH ALL ADJACENT ELEVATIONS

REVISIONS	<b>CITY OF FOUNTAIN VALLEY</b>	STANDARD PLAN NO.  <b>209</b>
	<b>REPAIRS TO CONCRETE ALLEY SECTION</b>	
	APPROVED BY: <b>MARK LEWIS R.C.E. 49335</b> CITY ENGINEER	DATE: 06/03/03
	SHEET: 1 OF 1	



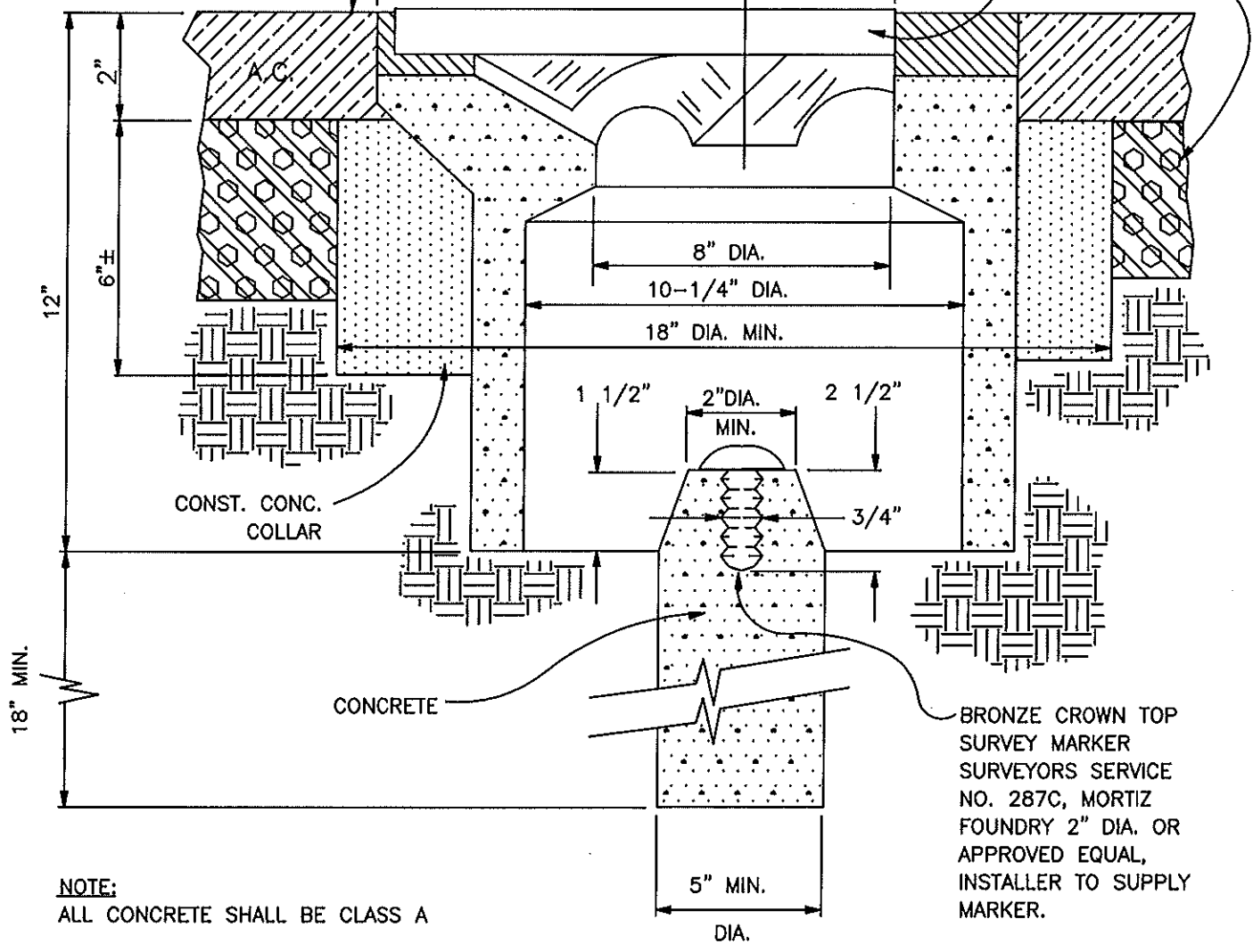
MONUMENT

14"

FRAME & COVER  
BROOKS PRODUCTS  
INC., NO. 4TT


FINISH STREET GRADE

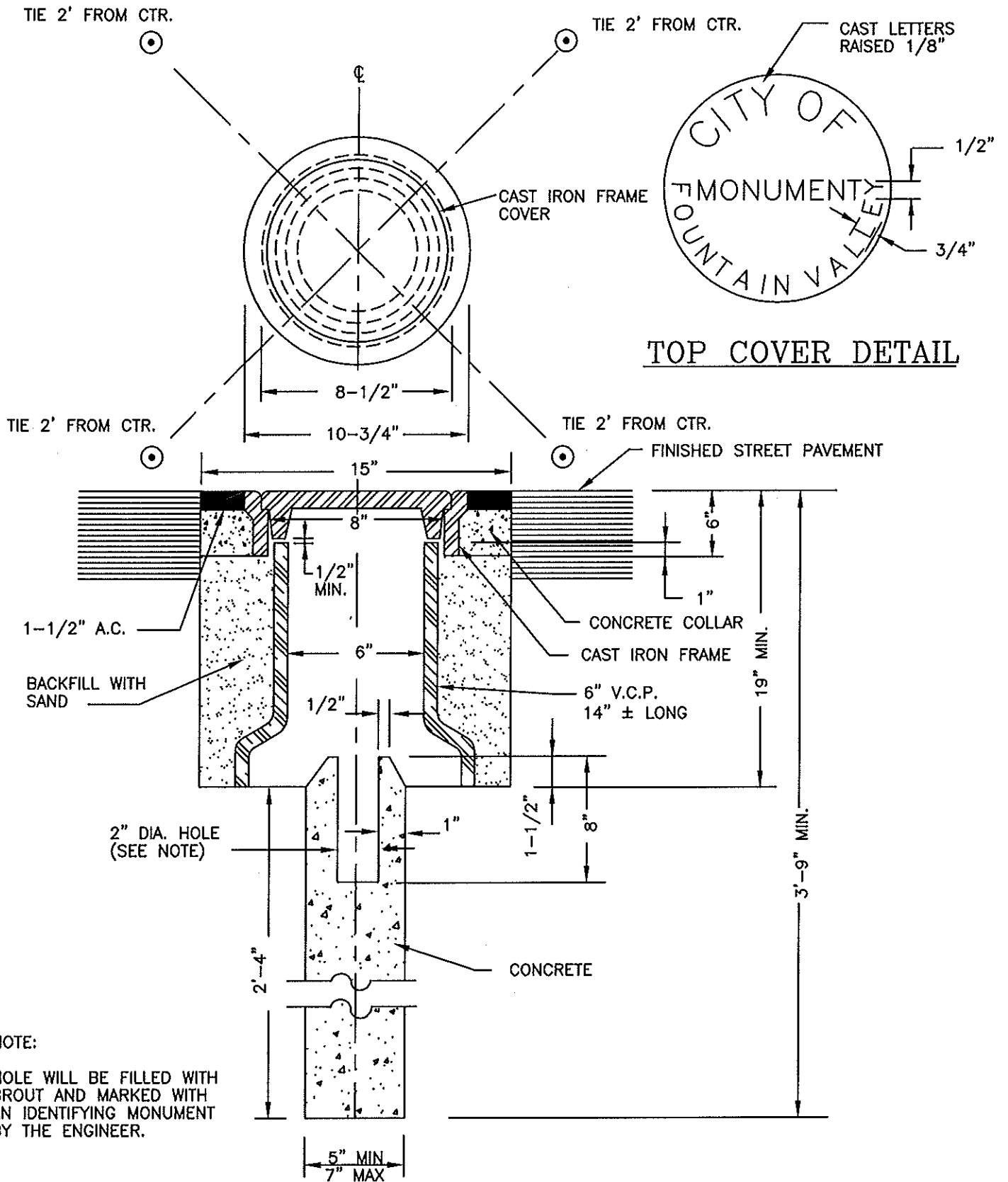
ROCK BASE



NOTE:  
ALL CONCRETE SHALL BE CLASS A

BRONZE CROWN TOP  
SURVEY MARKER  
SURVEYORS SERVICE  
NO. 287C, MORTIZ  
FOUNDRY 2" DIA. OR  
APPROVED EQUAL,  
INSTALLER TO SUPPLY  
MARKER.

REVISIONS	<b>CITY OF FOUNTAIN VALLEY</b>	STANDARD PLAN NO.
	SURVEY MONUMENT	<b>210-1</b>
	APPROVED BY:  MARK LEWIS R.C.E. 49335 CITY ENGINEER	DATE: 06/03/03 SHEET: 1 OF 3



REVISIONS

CITY OF FOUNTAIN VALLEY

STANDARD  
PLAN NO.

SURVEY MONUMENT TYPE "A"

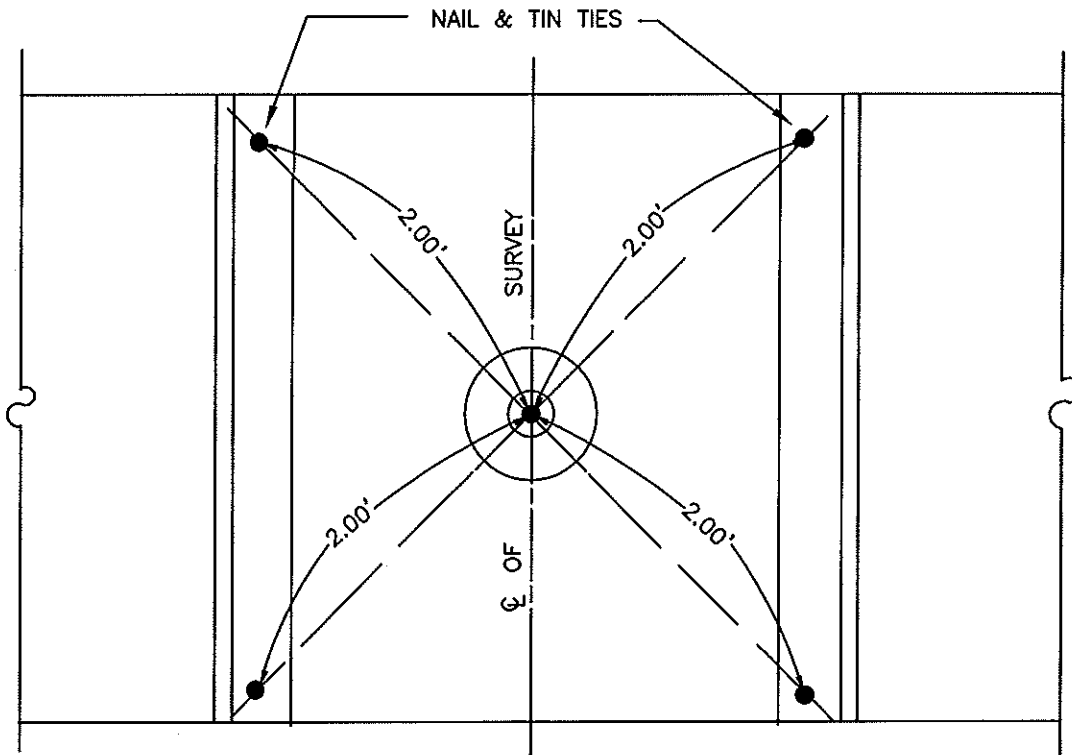
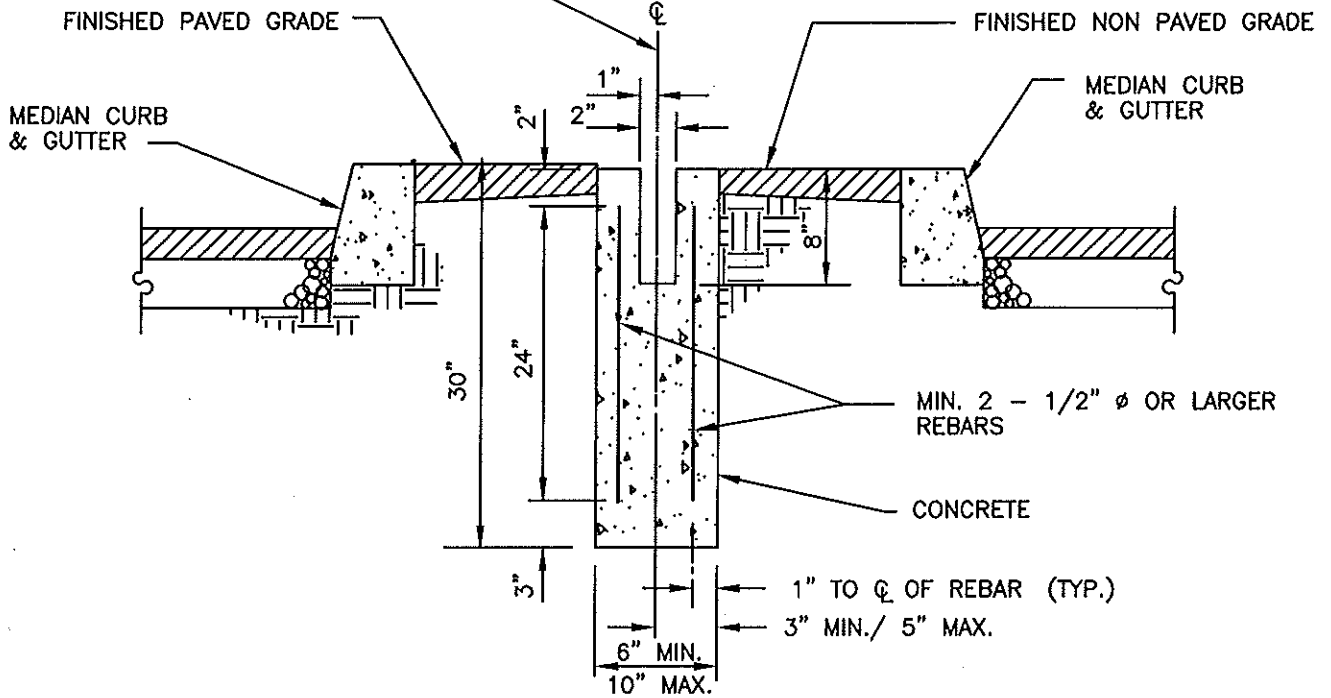
210-2

APPROVED BY:   
MARK LEWIS R.C.E. 49335  
CITY ENGINEER

DATE: 06/03/03

SHEET: 2 OF 3

HOLE WILL BE FILLED  
WITH GROUT AND IDENTIFYING  
MONUMENT BY THE ENGINEER



NOTE:

1. THIS TYPE OF MARKER TO BE INSTALLED ONLY IN RAISED MEDIANS.

REVISIONS

CITY OF FOUNTAIN VALLEY

STANDARD  
PLAN NO.

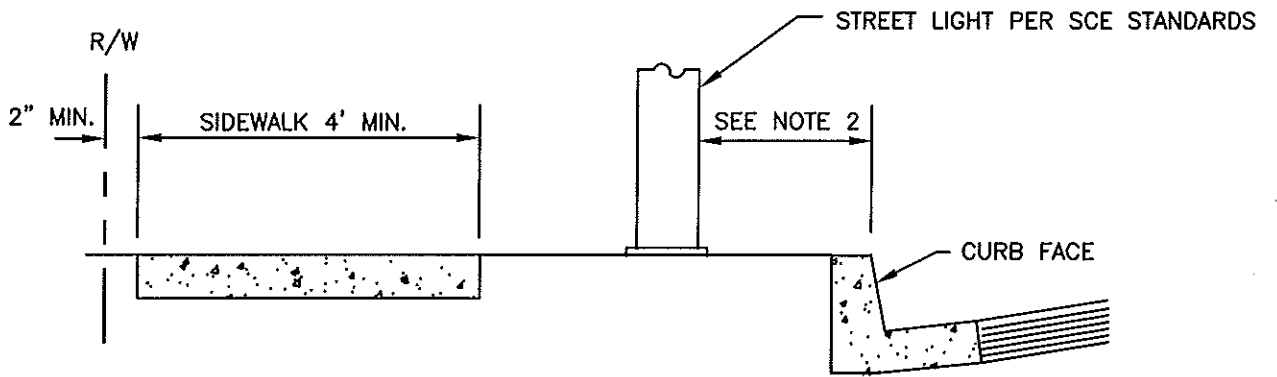
SURVEY MONUMENT TYPE "B"

210-3

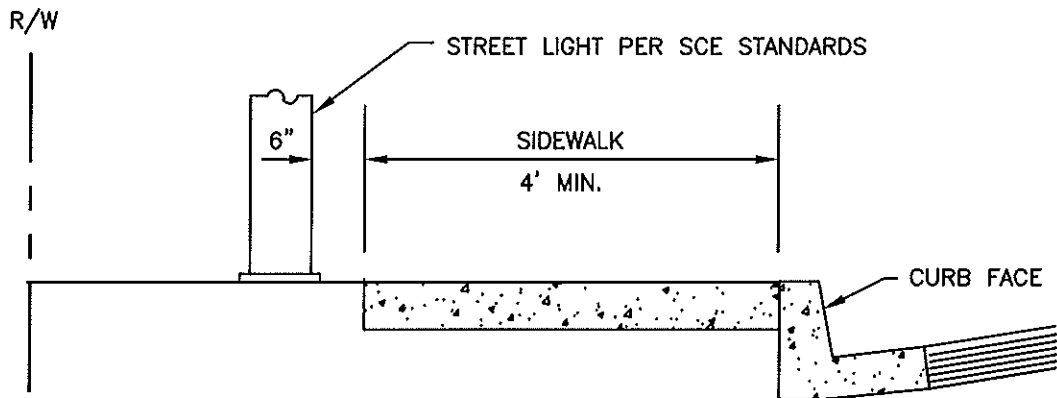
APPROVED BY:  MARK LEWIS R.C.E. 49335  
CITY ENGINEER

DATE: 06/03/03

SHEET: 3 OF 3



CASE I



CASE II

NOTE:

1. SEE CITY OF FOUNTAIN VALLEY LIGHTING STANDARD SPECIFICATIONS FOR STREET LIGHTING DESIGN INFORMATION.
2. FOR ANY VERTICAL OBSTRUCTION THE MINIMUM CLEARANCE FROM THE CURB SHALL BE 18 INCHES WHERE PARKING IS NOT PERMITTED AND 36 INCHES WHERE PARKING IS PERMITTED.

REVISIONS

CITY OF FOUNTAIN VALLEY

STREET LIGHTS PARKWAY LOCATION

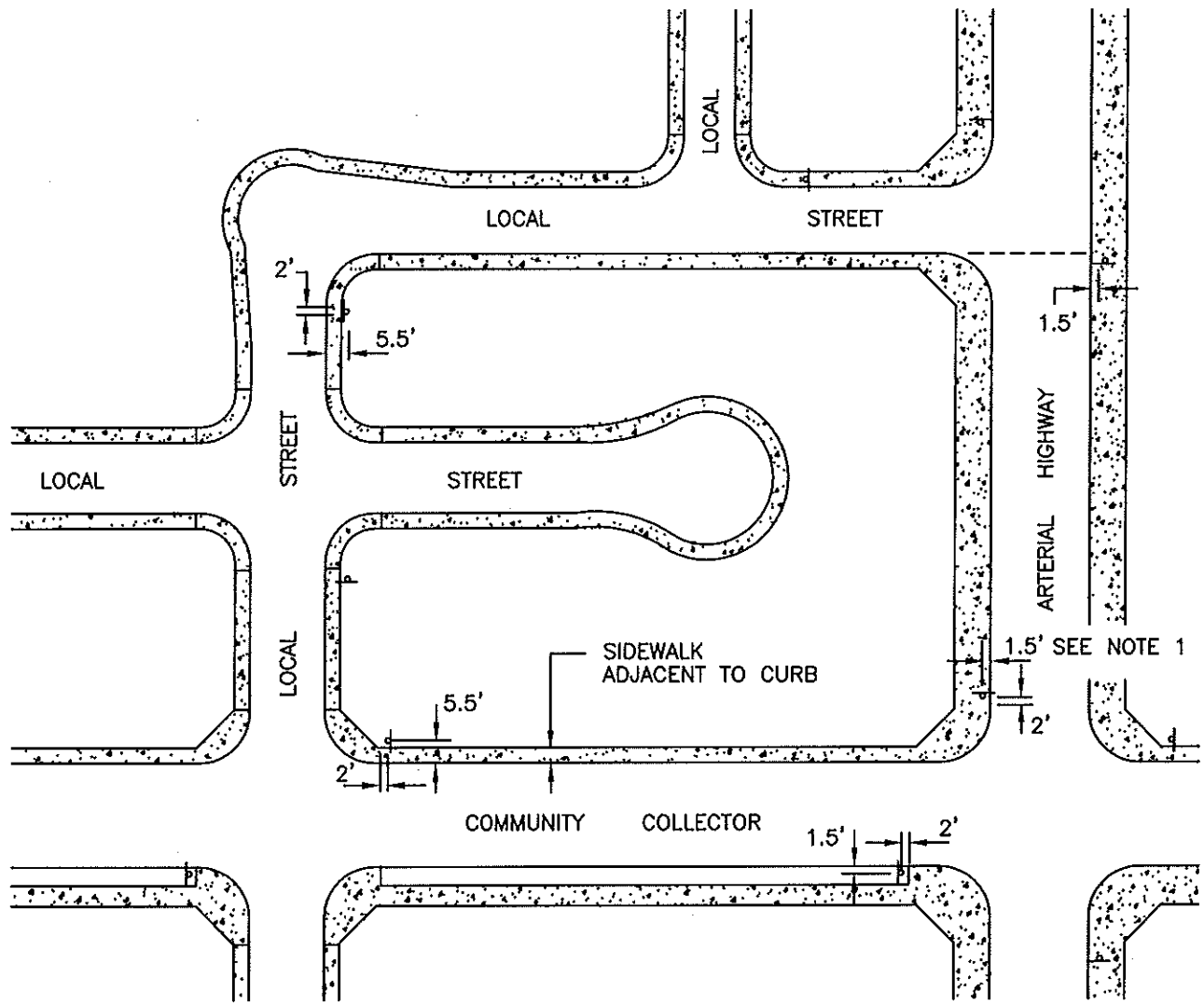
STANDARD  
PLAN NO.

211

APPROVED BY:  MARK LEWIS R.C.E. 49335  
CITY ENGINEER

DATE: 06/03/03

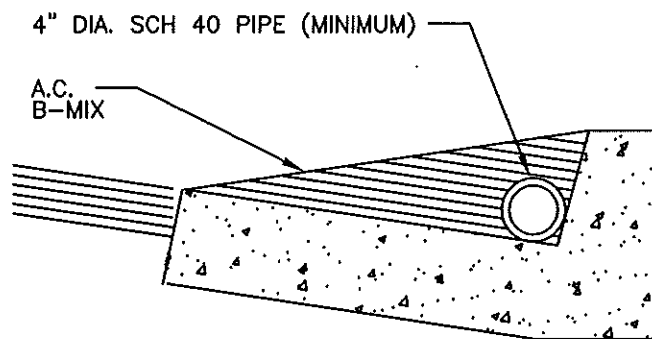
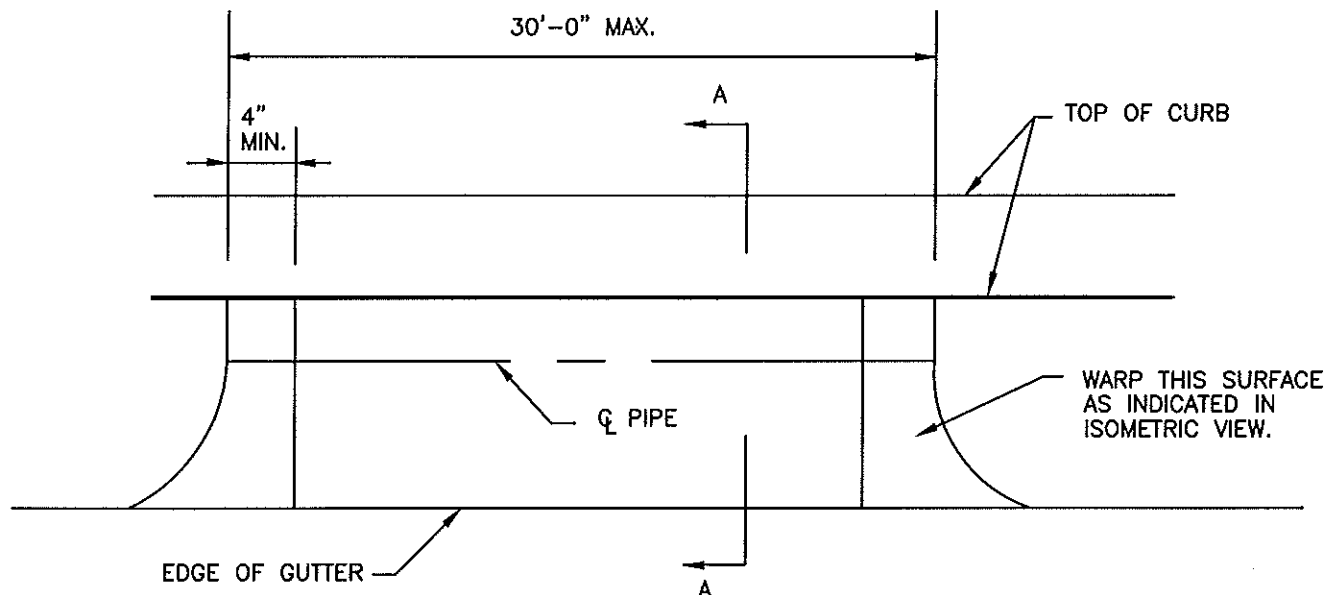
SHEET: 1 OF 1



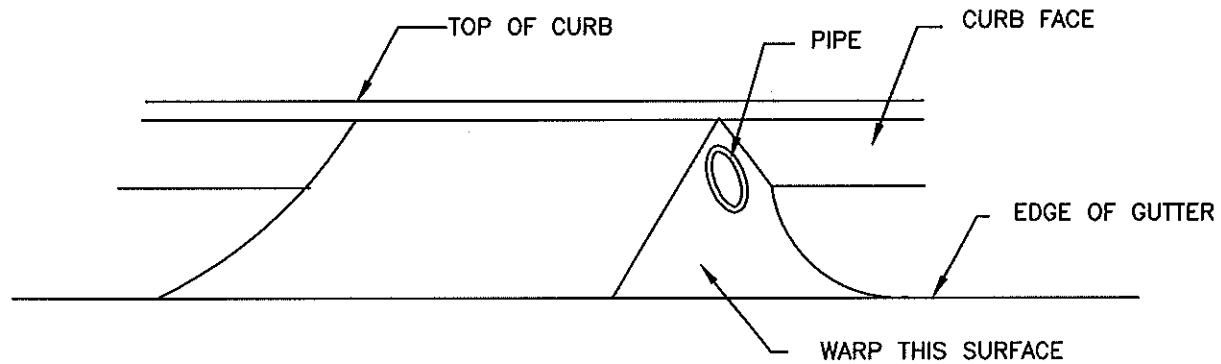
**NOTES:**

1. ALL STREET NAME SIGNS SHALL BE LOCATED IN ACCORDANCE WITH STANDARD PLAN No. 214, SIGN SHALL BE 2' FROM B.C.R.
2. STREET NAME SIGNS SHALL BE PLACED AT THE NEAR RIGHT APPROACH OF MAJOR TRAFFIC FLOW.
3. IF OTHER AUXILIARY POSTS ARE LOCATED WITHIN 8' OF WHERE SIGNS ARE SHOWN, STREET NAME SIGNS SHALL BE BANDED TO AUXILIARY POST.

REVISIONS	<b>CITY OF FOUNTAIN VALLEY</b>	STANDARD PLAN NO.  <b>212</b>
	<b>STREET NAME SIGNS LOCATIONS</b>	
	APPROVED BY:  MARK LEWIS R.O.E. 49335 CITY ENGINEER	DATE: 06/03/03
	SHEET: 1 OF 1	



**SECTION A-A**

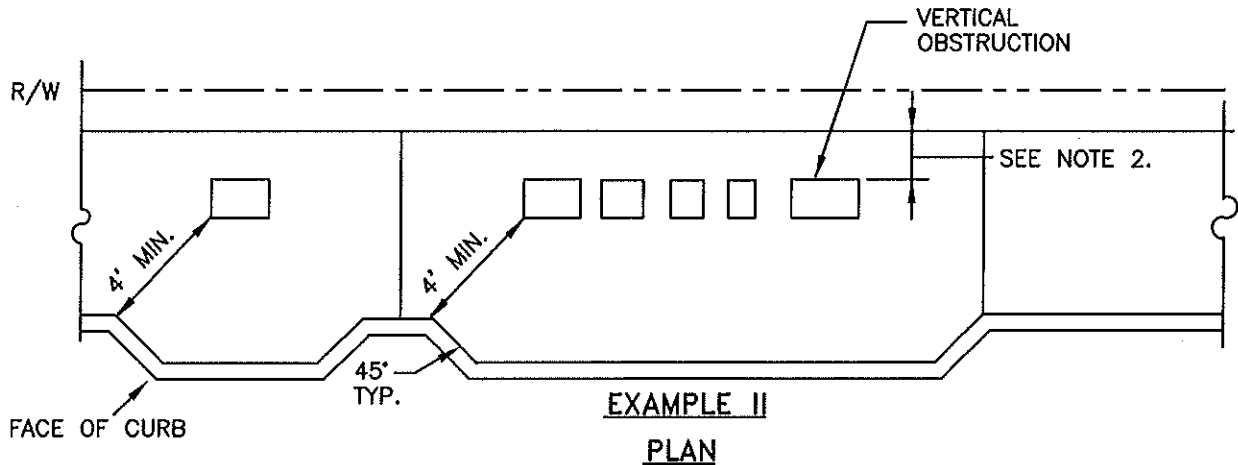
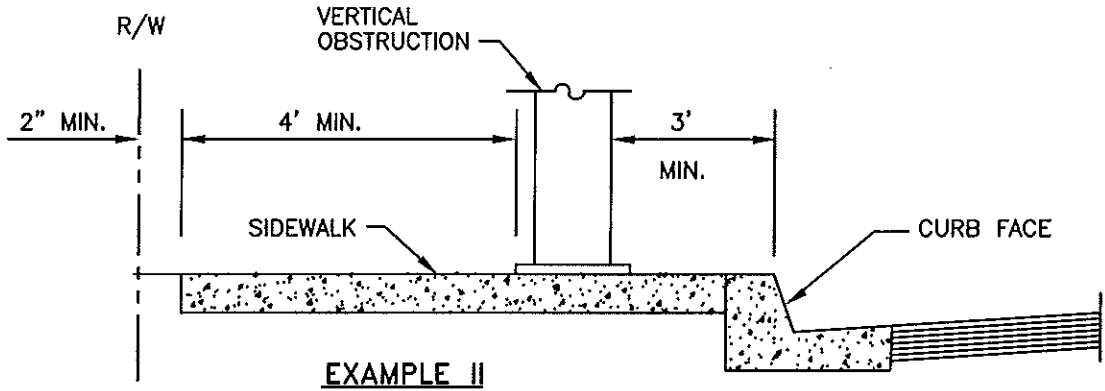
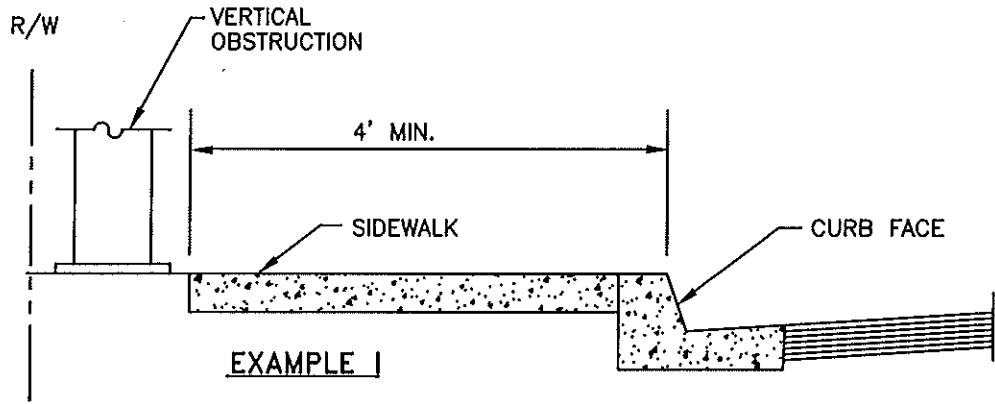


**ISOMETRIC**

**NOTES:**

1. AN ENCROACHMENT PERMIT IS REQUIRED.
2. RAMP SHALL NOT EXTEND BEYOND LIP OF GUTTER.

REVISIONS	<b>CITY OF FOUNTAIN VALLEY</b>	STANDARD PLAN NO.  <b>213</b>
	<b>TEMPORARY ACCESS RAMP</b>	
	APPROVED BY: <b>MARK LEWIS R.C.E. 49335</b> CITY ENGINEER	
	DATE: 06/03/03	SHEET: 1 OF 1



NOTES:

1. THE DISTANCE FROM THE CURB FACE TO ANY PART OF A FIRE HYDRANT SHALL NOT BE LESS THAN 2 FEET NOR GREATER THAN 7 FEET.
2. FOR ANY VERTICAL OBSTRUCTION THE MINIMUM CLEARANCE FROM THE CURB SHALL BE 18 INCHES WHERE PARKING IS NOT PERMITTED AND 36 INCHES WHERE PARKING IS PERMITTED.
3. THE MINIMUM WIDTH OF CLEAR SIDEWALK SHALL BE 4 FEET FROM ANY VERTICAL OBSTRUCTION.
4. ANY UTILITY VAULT WITHIN THE SIDEWALK AREA SHALL HAVE A BOLT-DOWN COVER WITH A SLIP RESISTANT FINISH (SEE STD. 217)
5. ANY PARKWAY OBSTRUCTION SHALL BE SURROUNDED BY A CONCRETE PAD.
6. REFER TO STD. PLAN 201 FOR SIDEWALK CONSTRUCTION. CONTROL JOINTS SHALL BE LOCATED TO THE SATISFACTION OF THE P.W. INSPECTOR.

REVISIONS

CITY OF FOUNTAIN VALLEY

STANDARD  
PLAN NO.

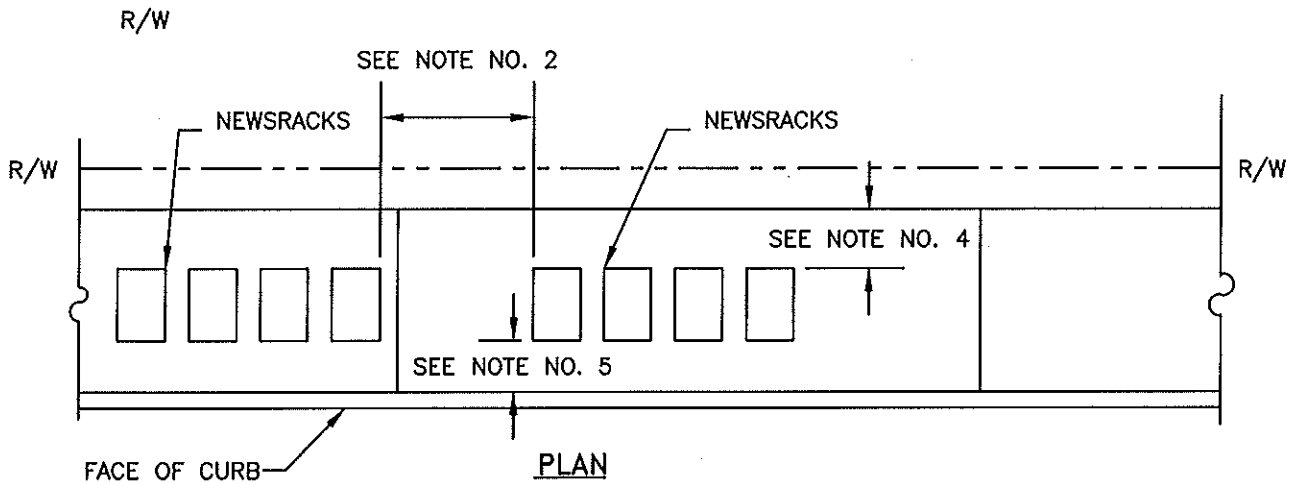
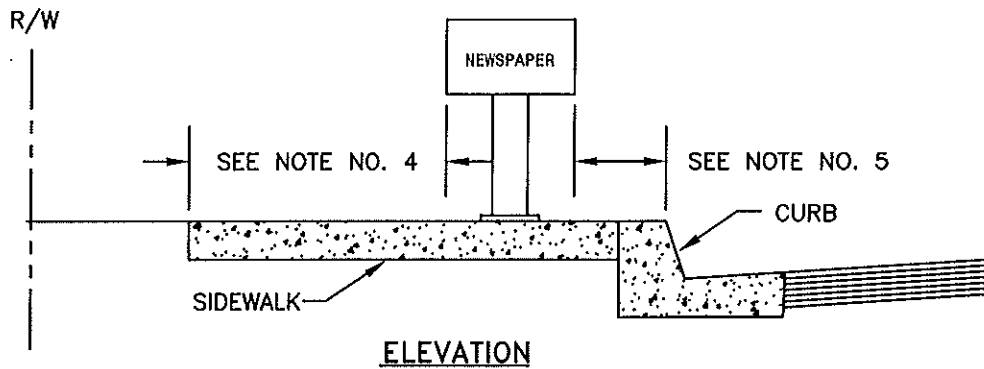
PARKWAY OBSTRUCTIONS

214

APPROVED BY:  MARK LEWIS R. C. E. 49335  
CITY ENGINEER

DATE: 06/03/03

SHEET: 1 OF 1



**NOTES:**

1. NO MORE THAN EIGHT NEWSRACKS PERMITTED WITHIN 200- FEET IN ANY DIRECTION, NO MORE THAN 16 PER BLOCK.
2. NO MORE THAN 4 NEWSRACKS PER GROUPING, SECOND GROUPING MUST BE AT LEAST 3- FEET FROM FIRST GROUPING.
3. NEWSRACK(S) DISPENSER SIDE SHALL FACE INWARD (AWAY FROM THE STREET).
4. THE MINIMUM WIDTH OF SIDEWALK PASSAGE FOR PEDESTRIANS SHALL BE 4- FEET.
5. NEWSRACK(S) PLACED NEAR THE EDGE OF SIDEWALK SHALL BE AT LEAST EIGHTEEN- INCHES FROM EDGE WHERE PARKING IS NOT PERMITTED AND THIRTY SIX- INCHES WHERE PARKING IS PERMITTED.
6. NEWSRACK(S) SHALL NOT BE PLACED IN A PARKWAY OR PLANTED AREA.
7. NEWSRACK(S) SHALL BE PLACED AT LEAST 20- FEET FROM ANY DRIVEWAY.
8. NEWSRACK(S) SHALL BE PLACED AT LEAST 20- FEET FROM ANY MARKED OR UNMARKED CROSS WALK.
9. NEWSRACK(S) SHALL BE PLACED AT LEAST 15- FEET FROM FIRE HYDRANTS, FIRE CALL BOXES OR OTHER EMERGENCY FACILITY.
10. NEWSRACK(S) SHALL BE PLACED AT LEAST 5- FEET AHEAD OF OR 25- FEET TO THE REAR OF ANY SIGN MARKING A BUS STOP.
11. NEWSRACK(S) SHALL BE PLACED AT LEAST 10- FEET FROM ANY BUS BENCH OR BUS SHELTER.
12. NEWSRACK(S) SHALL BE PLACED AT LEAST 3- FEET FROM ANY DISPLAY WINDOW.

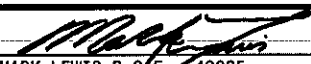
REVISIONS

**CITY OF FOUNTAIN VALLEY**

STANDARD  
PLAN NO.

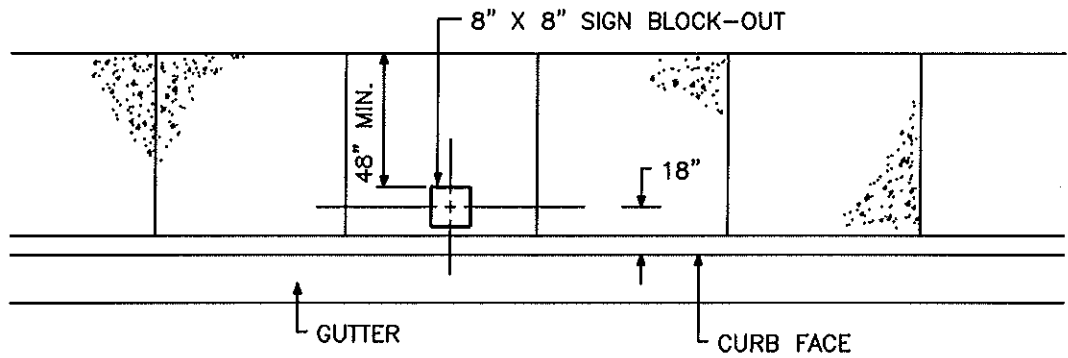
NEWSRACK(S) LAYOUT

**215**

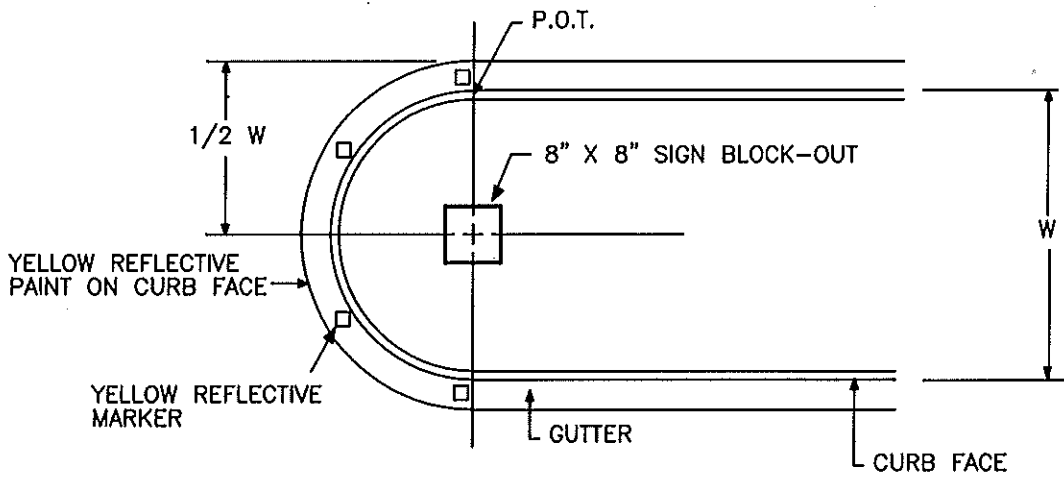
APPROVED BY:  MARK LEWIS R.C.E. 49335  
CITY ENGINEER

DATE: 06/03/03

SHEET: 1 OF 1



SIDEWALK LOCATION



MEDIAN LOCATION

NOTES:

1. SIGN POST BLOCK-OUTS SHALL BE USED FOR ANY SIGN IN CONCRETE.
2. MINIMUM CLEARANCE FROM BACK OF SIGN POST BLOCK-OUT TO BACK OF WALK SHALL BE 48".

REVISIONS

CITY OF FOUNTAIN VALLEY

STANDARD  
PLAN NO.

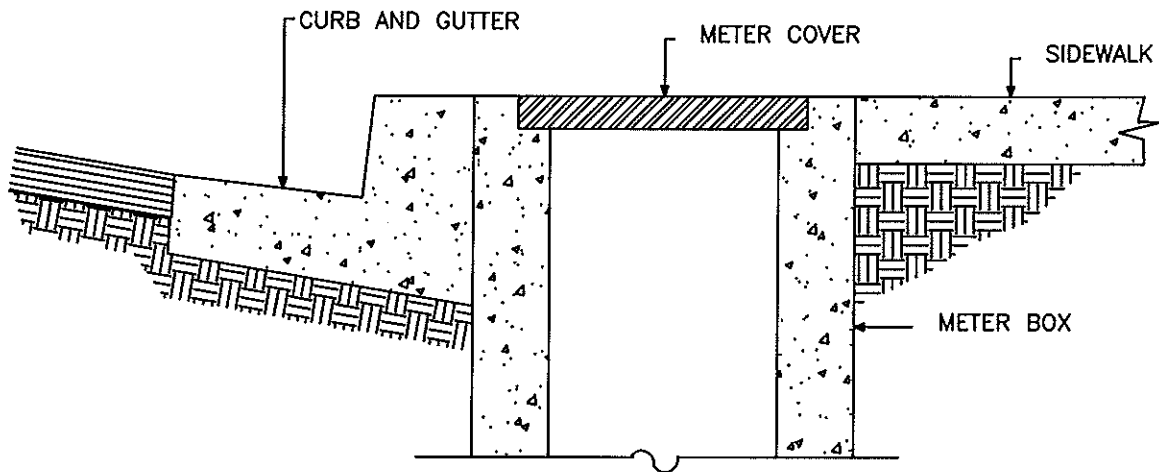
SIGN POST BLOCK OUT

216

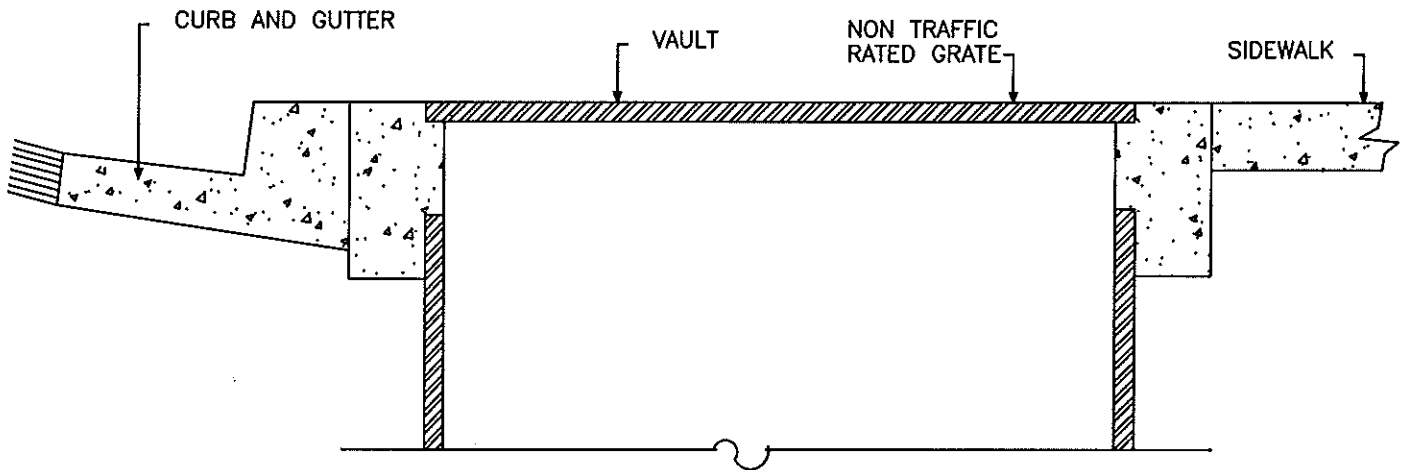
APPROVED BY:   
MARK LEWIS R. C. E. 49335  
CITY ENGINEER

DATE: 06/03/03

SHEET: 1 OF 1



METER BOX DETAIL



VAULT DETAIL

1. METER BOXES AND UTILITY VAULTS IN SIDEWALKS SHALL BE PERPENDICULAR TO AND ADJACENT WITH THE BACK OF CURB, AND SHALL BE FLUSH WITH TOP OF SIDEWALK.
2. METER BOXES AND UTILITY VAULTS WITHIN THE SIDEWALK AREA SHALL HAVE A BOLT DOWN COVER WITH A SLIP-RESISTANT FINISH, COVER SHALL BE BOLTED DOWN WITH 5 SIDED BOLTS, TOP OF BOLTS SHALL BE FLUSH WITH THE TOP OF COVER.


REVISIONS

**CITY OF FOUNTAIN VALLEY**

STANDARD  
PLAN NO.

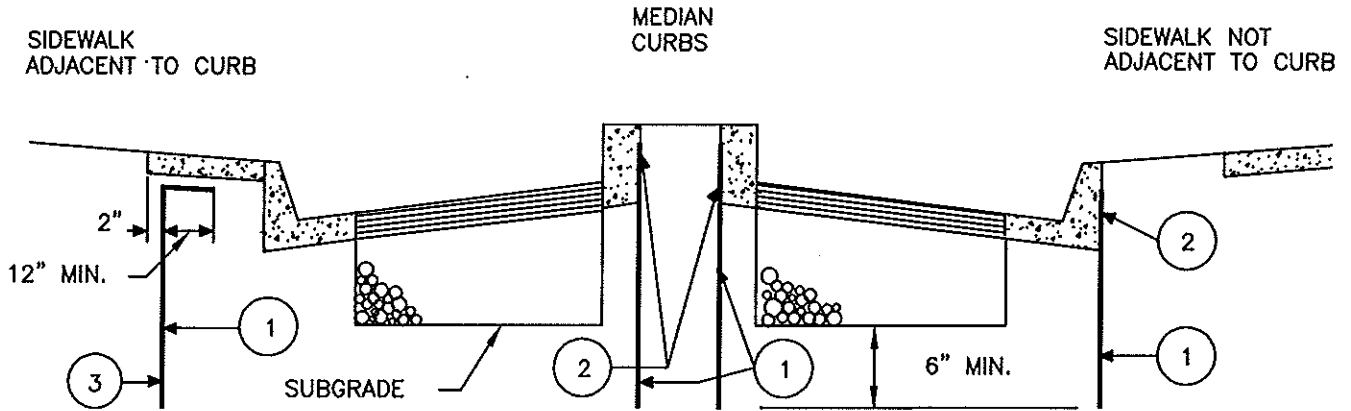
METER AND VAULT COVER DETAIL  
SIDEWALK INSTALLATION ONLY

**217**

APPROVED BY:   
MARK LEWIS R.C.E. 49335  
CITY ENGINEER

DATE: 06/03/03

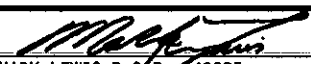
SHEET: 1 OF 1

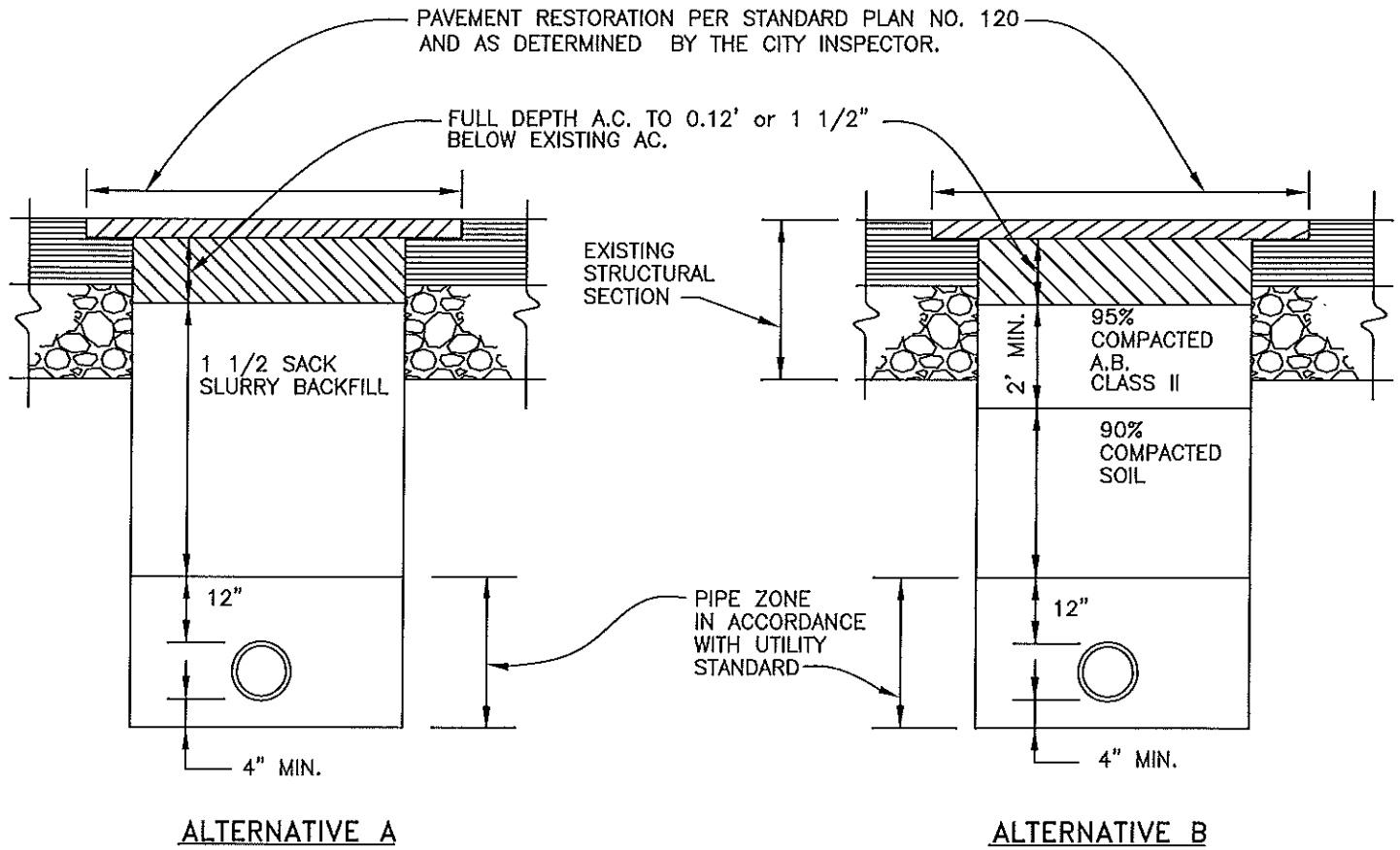


- ① 10 MIL. PLASTIC LINER
- ② APPLY HENRY'S STD. ASPHALT EMULSION #107 TO BACK OF CURB, AND BOTH SIDES OF PLASTIC LINER. KEEP TOP OF LINER 4" BELOW GRADE.
- ③ 24" MIN. DEPTH.

NOTE:


1. THE REQUIREMENT TO INSTALL MOISTURE BARRIERS MAY BE WAIVED BY THE CITY ENGINEER IN NON LANDSCAPED SITUATIONS. MOISTURE BARRIERS WILL NOT BE REQUIRED IN NON LANDSCAPED MEDIANS

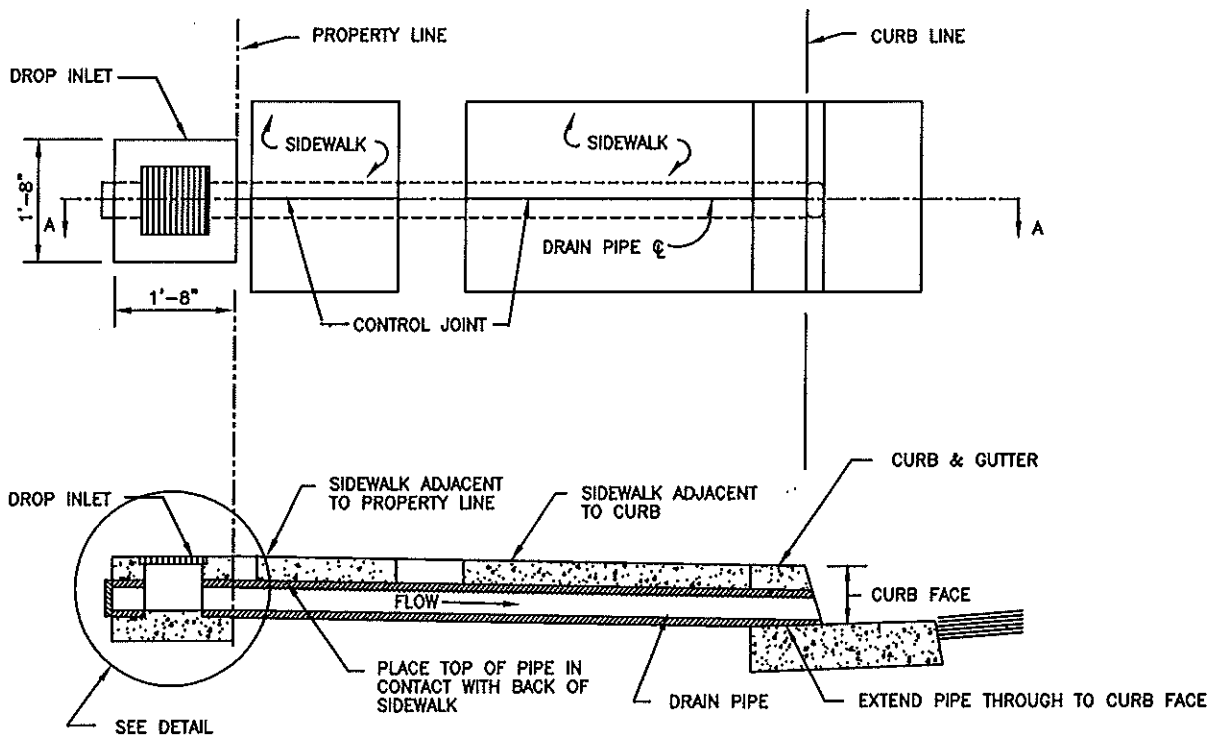
REVISIONS	<b>CITY OF FOUNTAIN VALLEY</b>		STANDARD PLAN NO.  <b>218</b>
	MOISTURE BARRIER DETAIL		
	 APPROVED BY: MARK LEWIS R.C.E. 49335 CITY ENGINEER		
	DATE: 06/03/03		SHEET: 1 OF 1



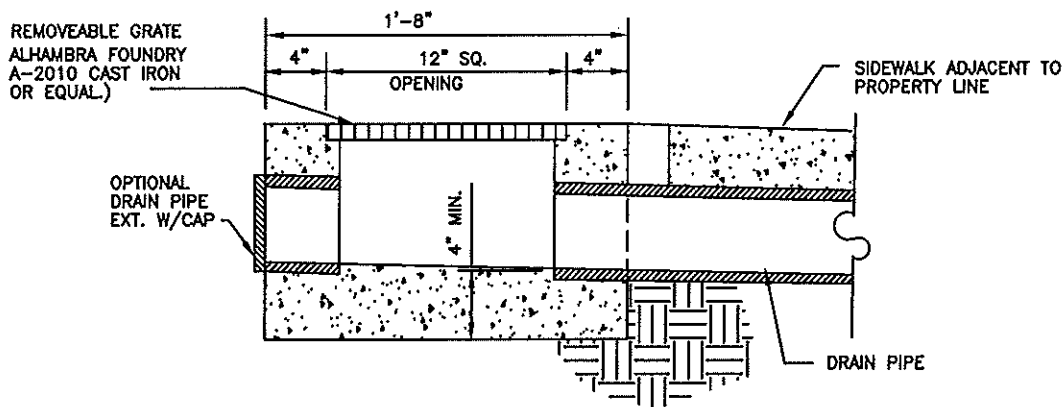
NOTES:

1. ALL UTILITIES TO BE INSTALLED BENEATH PUBLIC STREETS (LOCAL STREETS EXCEPTED) SHALL BE BORED UNLESS OTHERWISE APPROVED BY THE PUBLIC WORKS INSPECTOR. IF OPEN CUTTING OF A STREET IS ALLOWED, REPAIR OF THE STREET SHALL BE IN ACCORDANCE WITH THIS STANDARD PLAN.
2. BACKFILL ABOVE PIPE ZONE SHALL BE COMPACTED TO 90% MAXIMUM DENSITY WHEN SLURRY BACKFILL IS NOT USED (WITH THE EXCEPTION OF THE TWO FEET IMMEDIATELY UNDER THE ASPHALT WHICH SHALL BE CLASS II AGGREGATE BASE COMPACTED TO 95% MAXIMUM DENSITY). COMPACTION TESTS SHALL BE TAKEN BY CONTRACTOR AT RANDOM LOCATIONS FOR EVERY 8" OF LIFT.
3. UPON COMPLETION OF TRENCH REPAIR, AC SHALL BE GROUND TO 0.12 DEPTH AND REPAVED A FULL LANE WIDTH FOR EACH AND EVERY LANE AFFECTED FOR THE ENTIRE LENGTH OF THE TRENCH.
4. THE EDGE OF THE TRENCH SHALL BE A NEAT CUT AS APPROVED BY THE PUBLIC WORKS INSPECTOR. THE TRENCH SHALL BE CAPPED WITH AC EVEN WITH THE FINISHED GRADE TO THE SATISFACTION OF THE PUBLIC WORKS INSPECTOR.
5. FINAL ASPHALT PATCHING SHALL BE IN ACCORDANCE WITH STD. 120.

REVISIONS	<b>CITY OF FOUNTAIN VALLEY</b>		STANDARD PLAN NO.
	UTILITY TRENCH REPAIR		
11/18/10			
	 APPROVED BY: MARK LEWIS R.C.E. 49335 CITY ENGINEER		
	DATE: 06/03/03		SHEET: 1 OF 1



**SECTION A-A**



**DROP INLET DETAIL**

**NOTES:**

1. THIS STANDARD SHALL BE USED WHERE CURB & SIDEWALK ARE EXISTING.
2. CURB DRAIN SHALL BE CONSTRUCTED BY BORING THRU CURB FACE.
3. DRAIN PIPE SHALL BE CIRCULAR RIGID PLASTIC, (SCH 40) WITH AN INSIDE DIAMETER OF 3 INCHES FOR 6 INCH CURB FACE & 4 INCHES FOR 8 INCH CURB FACE.
4. DROP INLET MAY BE AN APPROVED PREFABRICATED DESIGN OR CONSTRUCTED ON-SITE. A TEE OR ELBOW, WITH A REMOVABLE GRATE-TYPE CAP, ENCASED IN CONCRETE, IS AN ACCEPTABLE ALTERNATE.
5. NO MORE THAN 2 CURB DRAINS PERMITTED FOR ONE LOT.
6. IF EXISTING SIDEWALK IS REMOVED FOR INSTALLATION IT SHALL BE REPLACED IN FULL PANELS SCORE MARK TO SCORE MARK PER STANDARD PLAN 201.

REVISIONS

**CITY OF FOUNTAIN VALLEY**

**UNDER SIDEWALK DRAIN- EXISTING CONSTRUCTION**

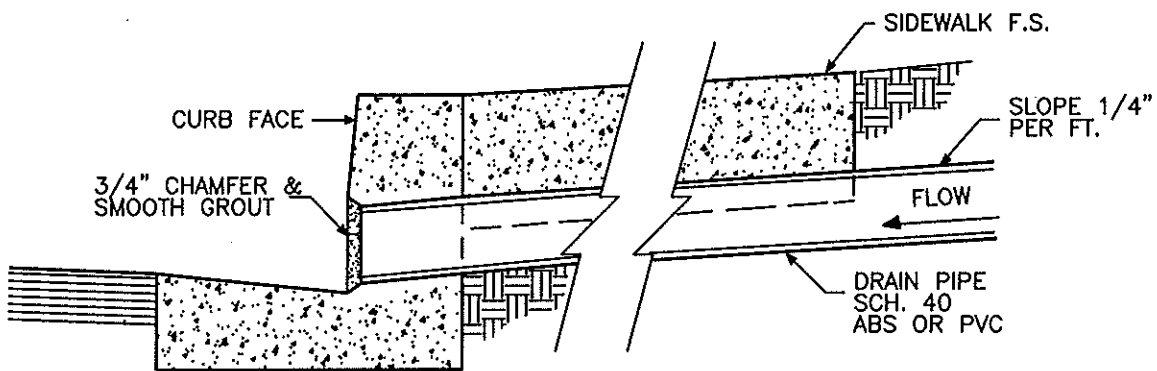
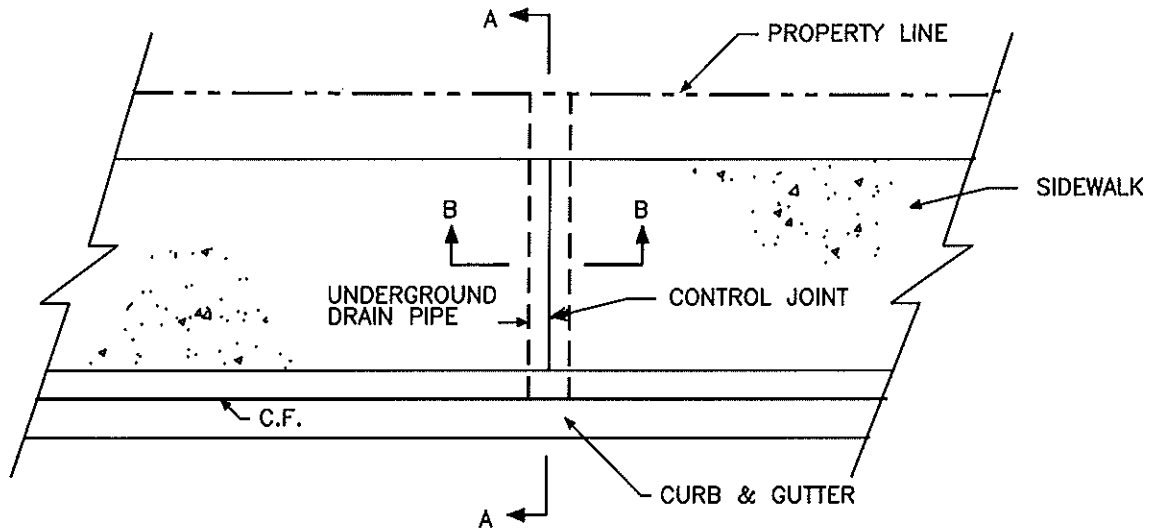
STANDARD  
PLAN NO.

**220-1**

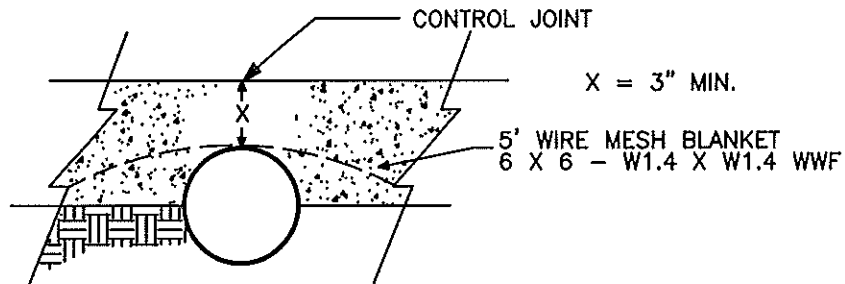
APPROVED BY:  MARK LEWIS R.C.E. 49335  
CITY ENGINEER

DATE: 06/03/03

SHEET: 1 OF 2



**SECTION A-A**



**SECTION B-B**

**NOTE:**

1. 3 INCH Ø MAXIMUM SIZE DRAIN PIPE FOR 6 INCH CURB FACE, AND 4 INCH Ø MAXIMUM SIZE FOR 8 INCH CURB FACE.


REVISIONS

**CITY OF FOUNTAIN VALLEY**

STANDARD  
PLAN NO.

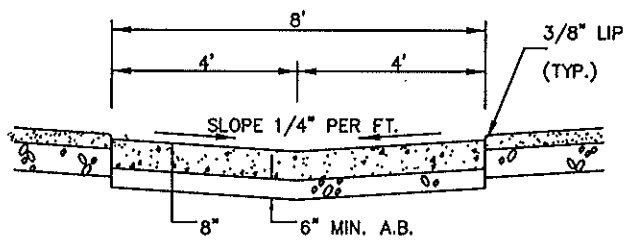
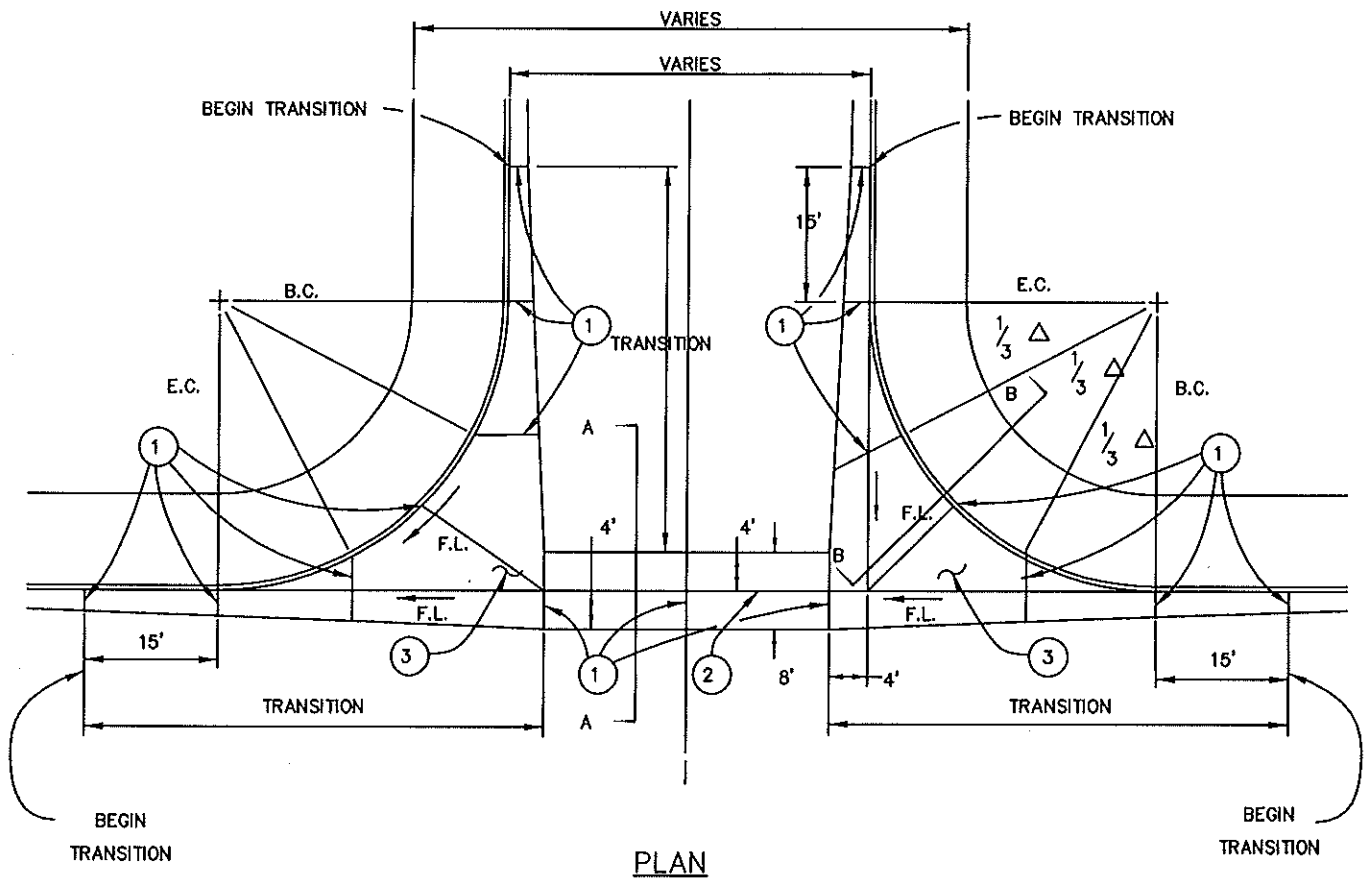
**UNDER SIDEWALK DRAIN- NEW CONSTRUCTION**

**220-2**

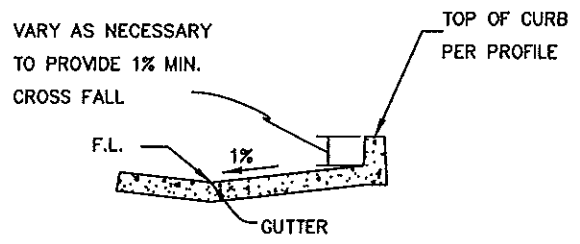
APPROVED BY:  MARK LEWIS R.C.E. 49335  
CITY ENGINEER

DATE: 06/03/03

SHEET: 2 OF 2



SECTION A-A



SECTION B-B

NOTES:

- ① PROVIDE WEAKENED PLANE OR QUICK JOINT OR APPROVED EQUAL.
- ② ROUGH BROOM FINISH WITH 8" FLOWLINE SMOOTH TROWELED.
- ③ INSTALL 4-#4 SMOOTH BARS 4' LONG, 24" C.C. 3" FROM BOTTOM

GENERAL NOTES:

- 1. MINIMUM CROSS GUTTER SLOPE SHALL BE 0.30%.

REVISIONS


06/08/06

CITY OF FOUNTAIN VALLEY

CONCRETE CROSS GUTTER

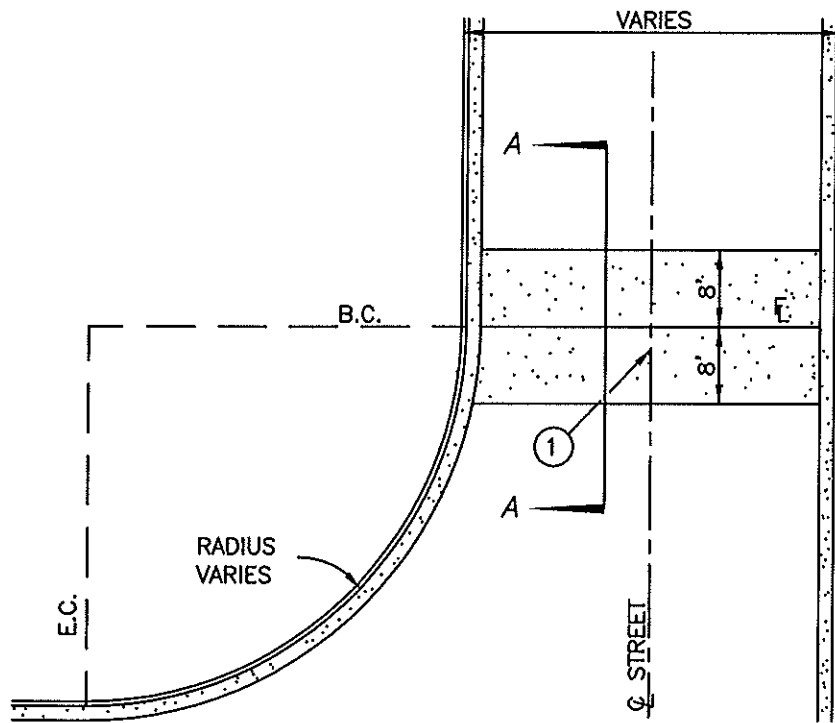
STANDARD  
PLAN NO.

221 - 1

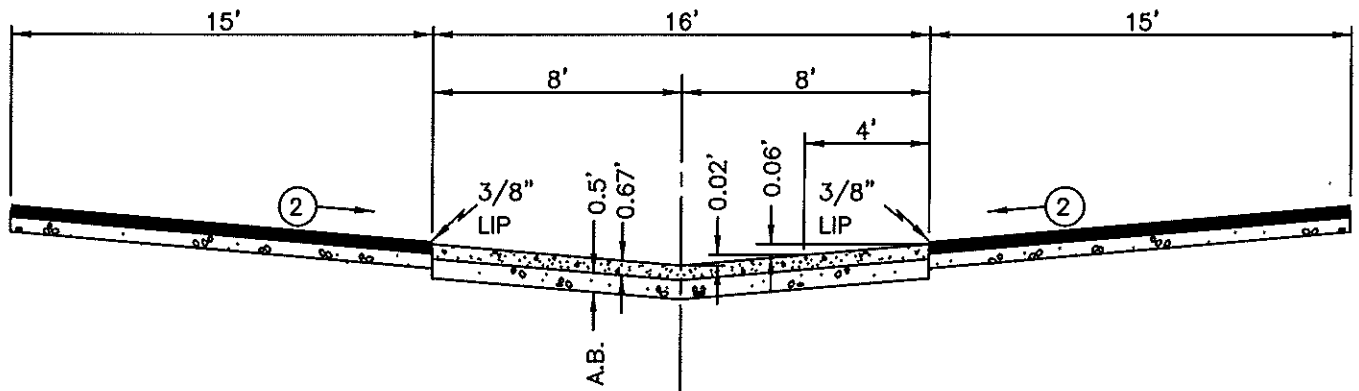
APPROVED BY:  MARK LEWIS R.C.E. 49335  
CITY ENGINEER

DATE: 06/03/03

SHEET: 1 OF 2



PLAN



SECTION A-A

NOTES:

- ① WEAKENED PLANE OR QUICK JOINT.
- ② SLOPE STREET C.L. TO REGAIN CROWN.

REVISIONS

CITY OF FOUNTAIN VALLEY

STANDARD  
PLAN NO.

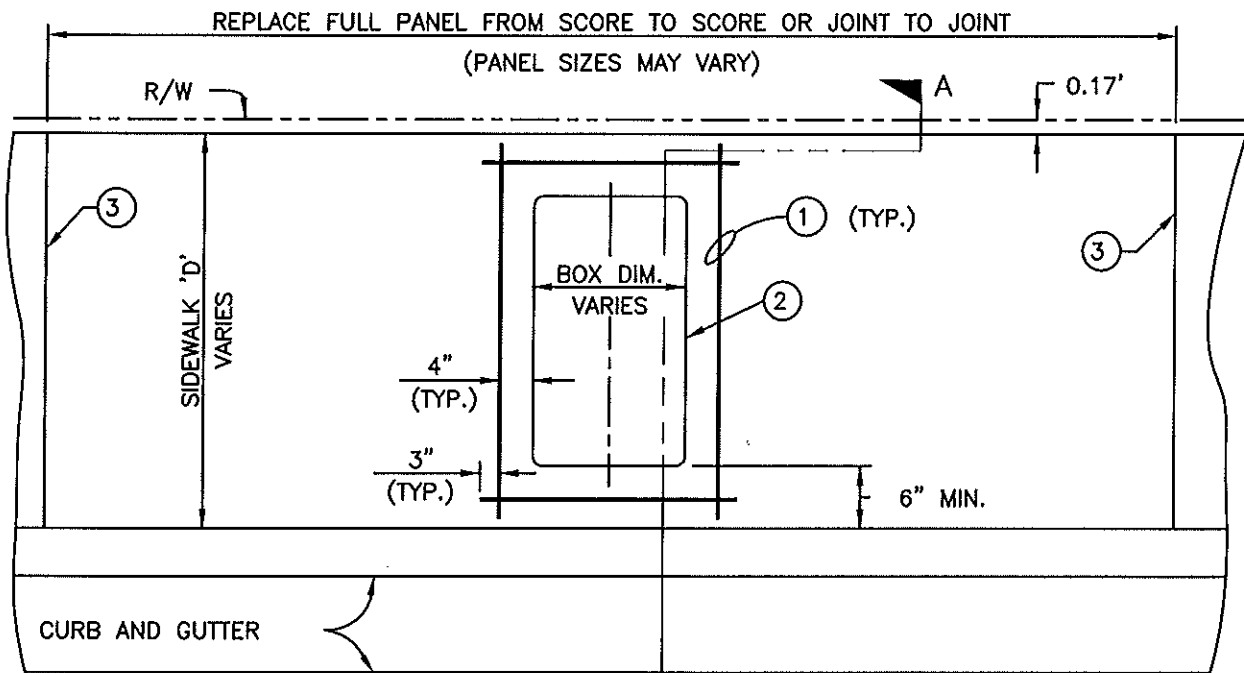
CONCRETE CROSS GUTTER

221-2

APPROVED BY:   
MARK LEWIS R.C.E. 49335  
CITY ENGINEER

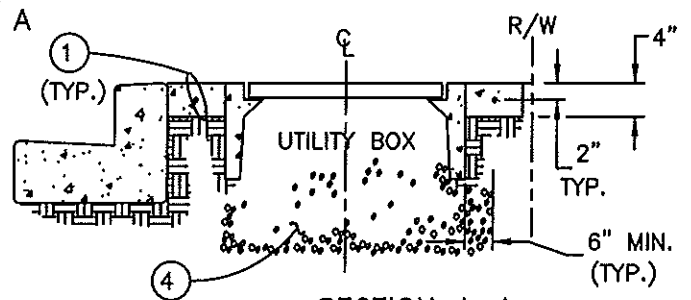
DATE: 08/03/03

SHEET: 2 OF 2



PLAN

**NOTE:** NO SPLITTING PANELS.  
(SEE GEN. NOTE 2)



SECTION A-A

**NOTES:**

- ① #4 REBAR SHALL BE INSTALLED WHENEVER UTILITY BOX OCCUPIES MORE THAN 70% OF SIDEWALK DIMENSION 'D'.
- ② LOCATION OF UTILITY BOXES SHALL BE ADJACENT TO CURB UNLESS OTHERWISE APPROVED ON PLANS. BOX AND LOCATION SHALL BE DETAILED. PEDESTALS AND OTHER ABOVE GRADE OBJECTS SHALL BE SHOWN AND LOCATED BY DIMENSIONS TO THE NEAREST 0.1'
- ③ SAW CUT OR REMOVE FULL PANELS TO EXISTING JOINT OR SCORE LINE ON EITHER SIDE OF UTILITY BOX.
- ④ ALL UTILITY BOXES SHALL BE PLACED ON A COMPACTED 6" MIN. PEA GRAVEL OR CRUSHED 3/4" ROCK BEDDING. WATER METER BOXES EXCLUDED.

**SPECIAL PROVISIONS:**

- 1. CONCRETE SIDEWALK SHALL BE A MIN. OF 5' IN WIDTH & BE SAW CUT PERPENDICULAR TO CURB FACE & REMOVED PENDING DISCRETION OF THE CITY INSPECTOR.

**GENERAL NOTES:**

- 1. UTILITY BOX PLACEMENT SHALL BE 1' MINIMUM FROM THE SCORE OR JOINT, OR CENTERED WITHIN THE PANEL.
- 2. THE LIMITS OF SIDEWALK REMOVAL IS TO THE DISCRETION OF THE CITY INSPECTOR.


REVISIONS

**CITY OF FOUNTAIN VALLEY**

STANDARD  
PLAN NO.

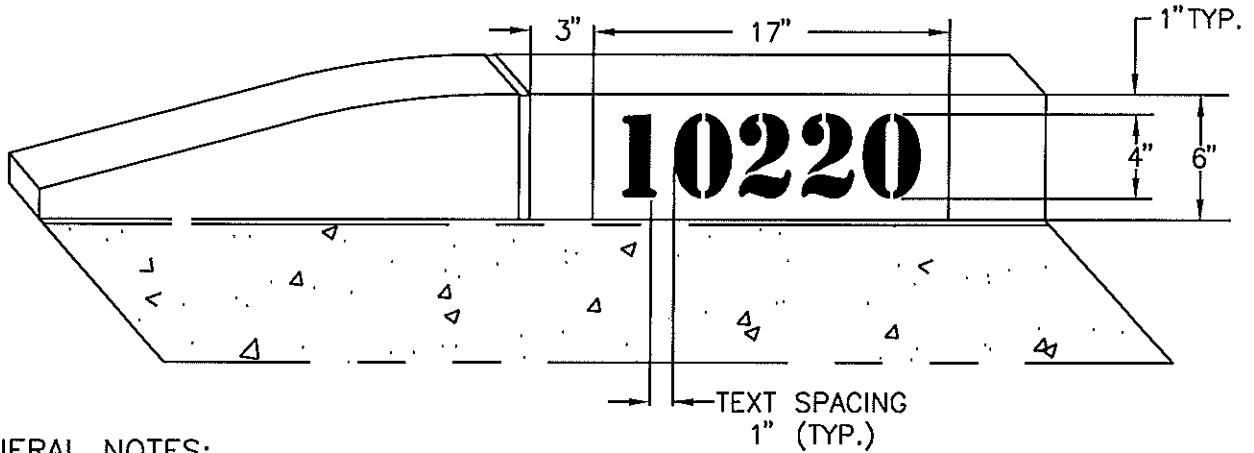
UTILITY BOX DETAILS

**222**

APPROVED BY:   
MARK LEWIS R.C.E. 49335  
CITY ENGINEER


DATE: 06/03/03

SHEET: 1 OF 1



GENERAL NOTES:

1. ADDRESS BACKGROUND SHALL BE WHITE UTILIZING REFLECTIVE MASONRY PAINT.
2. THE NUMBERS SHALL BE BLACK IN COLOR, 4" IN HEIGHT, STENCIL TYPE FONT, FROM TOP OF THE WHITE BACKGROUND, AND CENTERED AS SHOWN.

REVISIONS	<b>CITY OF FOUNTAIN VALLEY</b>	STANDARD PLAN NO.  <b>223</b>
	CURB FACE ADDRESS PAINTING	
	 APPROVED BY: MARK LEWIS R.O.E. 49335 CITY ENGINEER	
	DATE: 6/3/09	SHEET: 1 OF 1