

Naughty or Nice?

- ✗ **Naughty** – Wasting electricity.
- ✓ **Nice** – Switching to fluorescent bulbs.
For lights with several bulbs, try mixing incandescent and fluorescent bulbs for a “glow.”
- ✗ **Naughty** – Throwing household paints, detergents, sharps waste into the trash.
- ✓ **Nice** – Bringing household hazardous waste to the Household Hazardous Waste Collection Center at Rainbow Disposal.
17121 Nichols Street – Gate 6, Huntington Beach
- ✗ **Naughty** – Overwatering the lawn.
- ✓ **Nice** – Checking landscape irrigation for leaks and fixing them.
Before and just after a good storm, temporarily turn off your sprinklers. Why water in the rain?
- ✗ **Naughty** – Using excessive plastic bags.
- ✓ **Nice** – Using reusable bags or recycling plastic bags at stores or in your blue recyclables cart.
For small purchases, skip the bag altogether.

‘Tis the Season to Give

Now is the perfect time of the year to clean out the house and donate unwanted items to local non-profit organizations. Below are just a few.

Working Wardrobes
11614 Martens River Circle
workingwardrobes.org

Goodwill Attended Donation Center
9080 Talbert Ave.
(Btw. Talbert & Magnolia)
ocgoodwill.org

Curbside Used Oil Program

The City offers FREE residential used oil collection funded by a grant through CalRecycle. To schedule a used oil pick-up, call 800-HHW-PKUP, email hotline@curbside.com, or go to www.curbsideinc.com.

Upcoming Event!

E-waste + Paper Shredding

The City is hosting a FREE electronic waste collection (9am - 4pm) and paper shredding event (9am - 12pm) on Saturday, October 23, 2010, in the parking lot behind City Hall (10200 Slater Ave). Visit www.fountainvalley.org for more information.

Upcoming Event!

Used Oil Filter Exchange

Receive a FREE oil filter when you bring in your used oil filter for exchange on Saturday, October 30, 2010 from 8am - 2pm.

Kragen/O'Reilly Auto Parts
9880 Warner Ave
(714) 964-6427

Catch Basin Screens



Over 100 catch basins have been fitted with catch basin screens in high trash generating areas throughout the City. The screens were purchased through a grant funded by CalRecycle. Landscape waste, bottles, cans, plastic bags and other trash are collected in front of the screens, permitting regularly scheduled street sweepers to pick up materials to prevent them from entering the storm drain system, and eventually the ocean. Screens are installed with overflow bypass to prevent clogging during heavy storms.

Residential Car Washing

Did you know? Water from washing your car contains soap, residue from exhaust fumes, metals such as copper from brake pads and zinc from tires, gasoline, and motor oils. This water can carry these pollutants into the storm drain contributing to urban runoff pollution. Unlike water that enters the sewer (from sinks and toilets), water that enters the storm drain is not treated before entering our waterways. What's the best solution? Take your car to a commercial car wash or divert washwater to landscaped areas.

Holiday STREET SWEEPING Schedule



Holiday	Regularly Scheduled Day	New Sweeping Day
Thanksgiving	Thursday, 11/25/10	Thursday's sweeping → Friday, 11/26/10 Friday's sweeping → Tuesday, 11/30/10
Christmas	Saturday, 12/25/10	Unaffected
New Year	Saturday, 01/01/11	Unaffected

Holiday TRASH COLLECTION Schedule



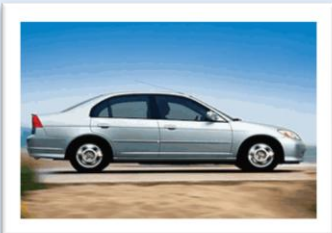
Holiday	Regularly Scheduled Day	New Collection Day
Thanksgiving	Thursday, 11/25/10	Thursday's collection → Friday, 11/26/10 Friday's collection → Saturday, 11/27/10
Christmas	Saturday, 12/25/10	Unaffected
New Year	Saturday, 01/01/11	Unaffected

Nine Things Fountain Valley Has Done to Help the Environment

1 Reduced energy use at City facilities by installing high efficiency fluorescent bulbs, motion sensor light switches, and skylights.



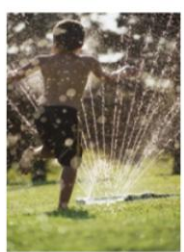
2 Replaced full-size non-emergency vehicles with hybrid compact cars, CNG powered trucks, and electric vehicles to reduce air pollution and gasoline use.



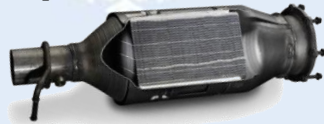
3 Established battery recycling drop-off locations (Senior Center and FV Recreation Center), organized quarterly electronic waste events, and implemented residential recycling program through Rainbow Disposal to support recycling efforts and reduce landfill waste.



4 Upgraded landscape irrigation systems and controllers at City parks to reduce water consumption by as much as 30%.



5 Installed special filters on diesel trucks to remove soot from the diesel engine exhaust, thereby reducing air pollution.



6 Transitioned from incandescent traffic signal lights to LED lights to increase visibility and provide energy savings.



7 Diverted used tires from landfills by utilizing rubberized asphalt concrete (RAC) for pavement projects. Two projects used up to 15,905 tons of RAC, and consumed 37,000 recycled tires to pave three linear miles of road. Vertically stacking all 37,000 tires would equal 24,666 ft. or 4.67 miles in height!



8 Converted water well pump systems from natural gas-powered to more efficient electric-powered systems.



9 Implemented \$25 parkway tree planting program. Don't have a tree by the curb in front of your property? Call the City at (714) 593-4433 to order an approved tree for \$25.



City Hall Holiday Schedule

In observance of Veteran's Day, Thanksgiving, Christmas, and New Year's Day, City Hall will be closed the following days (alternate Fridays are also closed):

November 11, 25, 26
December 24, 27-31

Holiday Tree Shopping?

Select a fresh tree. The needles of pines and spruces should bend and not break. On fir species, a needle pulled from a fresh tree will snap when bent, much like a fresh carrot. Look for a trunk sticky with sap.

Artificial trees. Choose one that is tested and labeled as fire resistant. Artificial trees with built-in electrical systems should have the UL label.

Psst!

Holiday trees will be collected after Christmas Day on your regularly scheduled collection day up to two weeks after New Year's Day.

In the winter, lawns do not need weekly mowing and require much less water. Species such as Bermuda grasses are dormant in the winter and only require water once every 3-4 weeks or less if it rains. Reset the irrigation clock to water less frequently. Redirect water from downspouts, and channel it across lawns and into garden beds away from the house.